



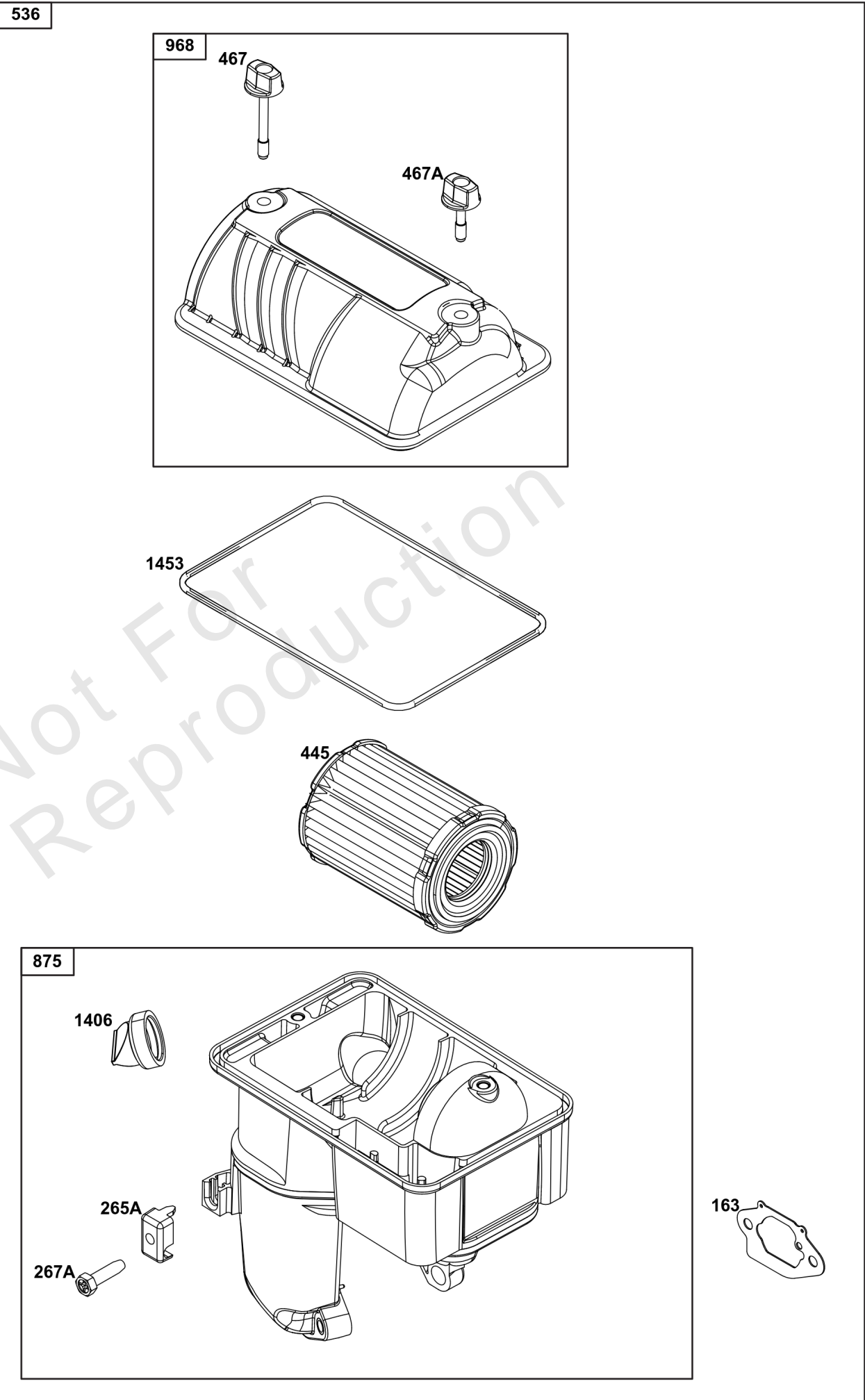
# Parts Manual

Mfg. No: 25V332-0003-F1



Model Components	Page
Air Cleaner Group. ....	4
Blower Housing Group. ....	6
Carburetor Group. ....	8
Controls Group. ....	10
Crankcase Cover/Sump and Lubrication Group. ....	12
Crankshaft Group. ....	14
Cylinder Group. ....	16
Cylinder Head Group. ....	18
Exhaust Group. ....	20
Flywheel, Ignition, and Starter Group. ....	22
Fuel Supply Group. ....	24
Replacement Engine - US & Canada. ....	26


Not For  
Reproduction




## *Air Cleaner Group*

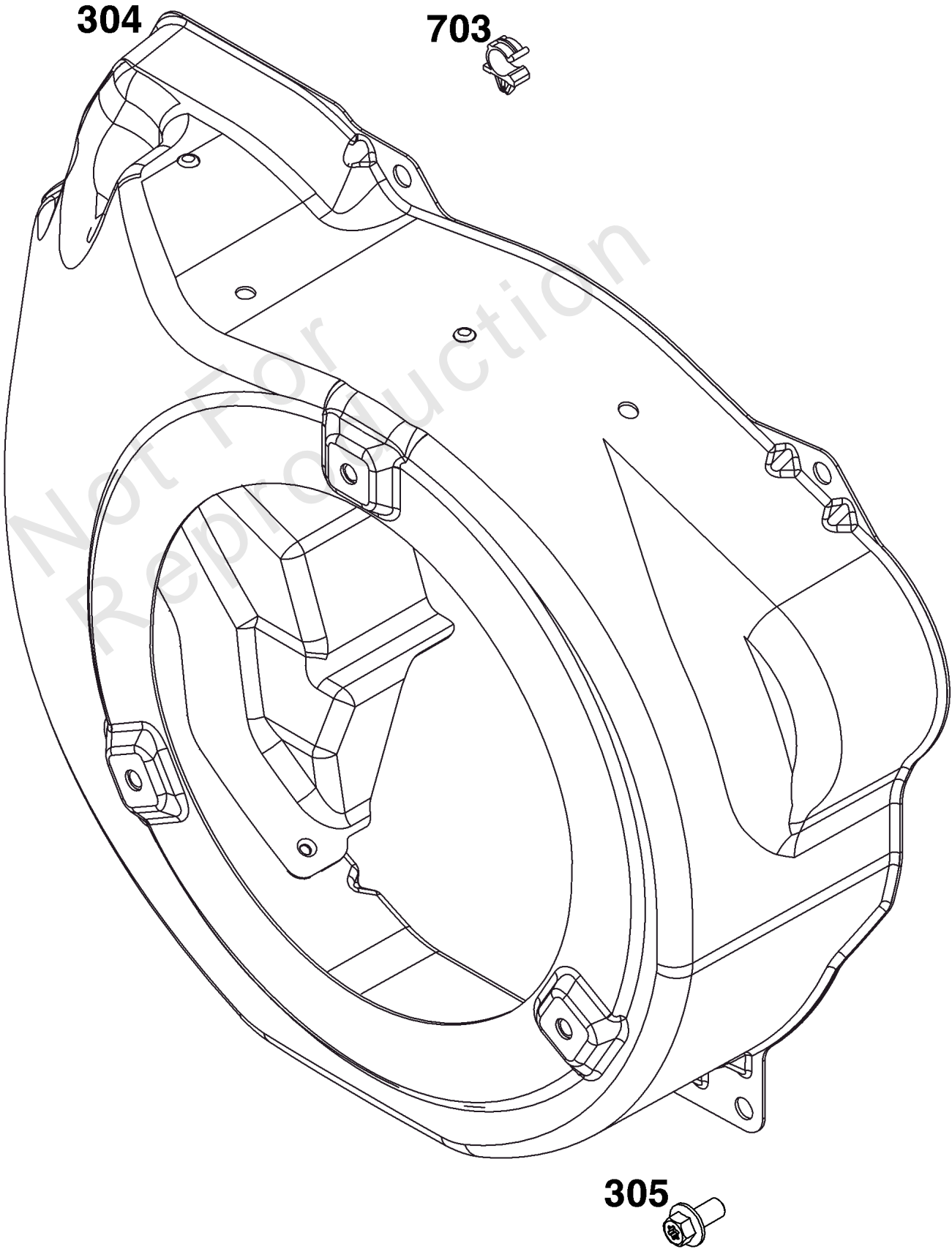
REF NO	PART NO	QTY	DESCRIPTION
163	-----	1	GASKET, Air Cleaner -(Part information located in Carburetor Group.)
265A	-----	1	CLAMP, Casing -(Part information located in Controls Group.)
267A	-----	1	SCREW -(Part information located in Controls Group.)
445	84002310	1	FILTER, A/C Cartridge
467	84004159	1	KNOB, Air Cleaner Cover
467A	596759	1	KNOB, Air Cleaner Cover
536	84004266	1	CLEANER, Air
875	84004267	1	BASE, AIR CLEANER
968	84004278	1	COVER, Air Cleaner
1406	84007679	1	VALVE, Debris
1453	84004276	1	SEAL, Air Cleaner Cover

1036 

1319 

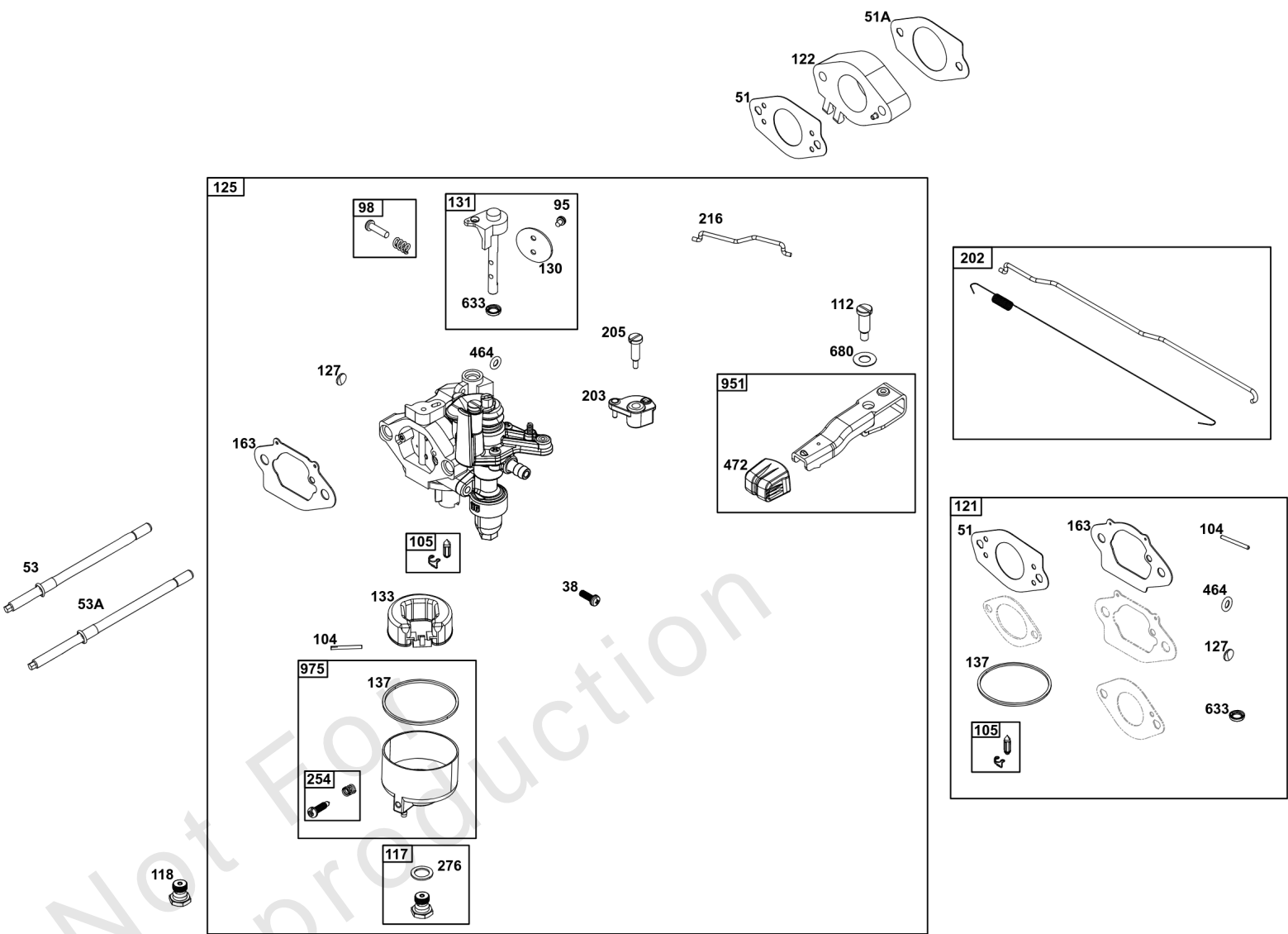
1319B 

1319A 



**Blower Housing Group**

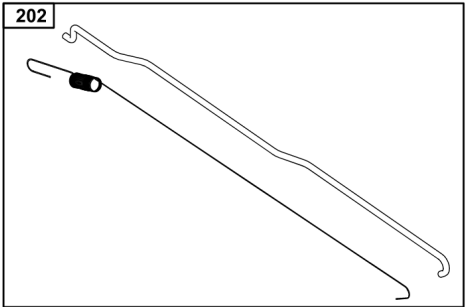
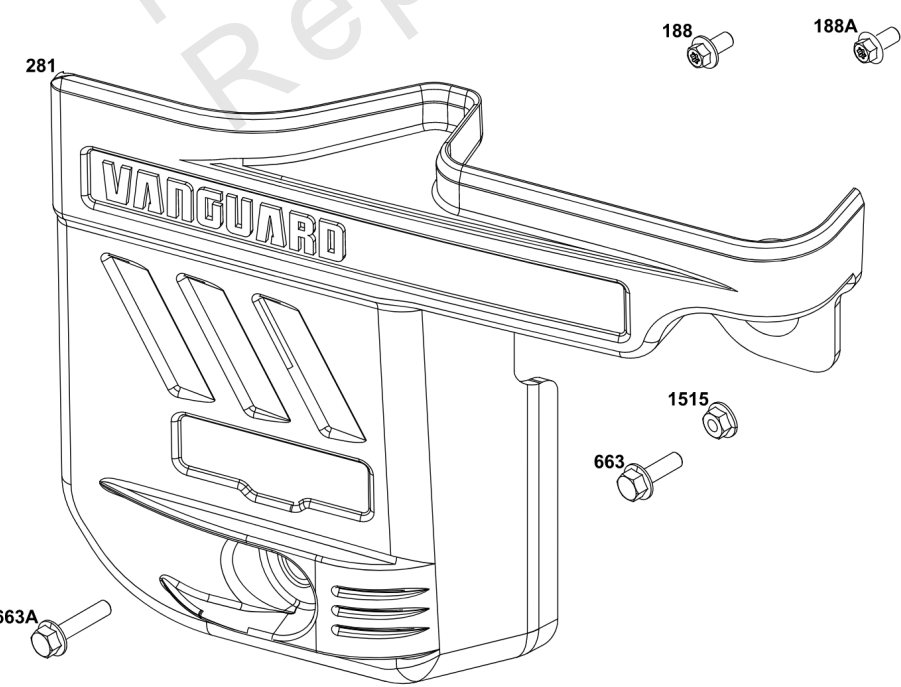
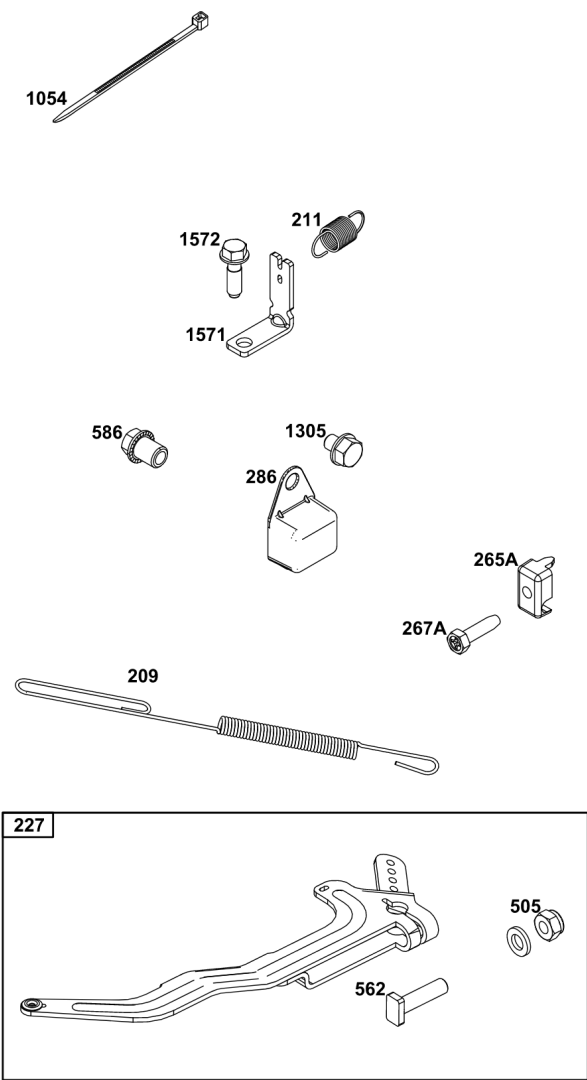
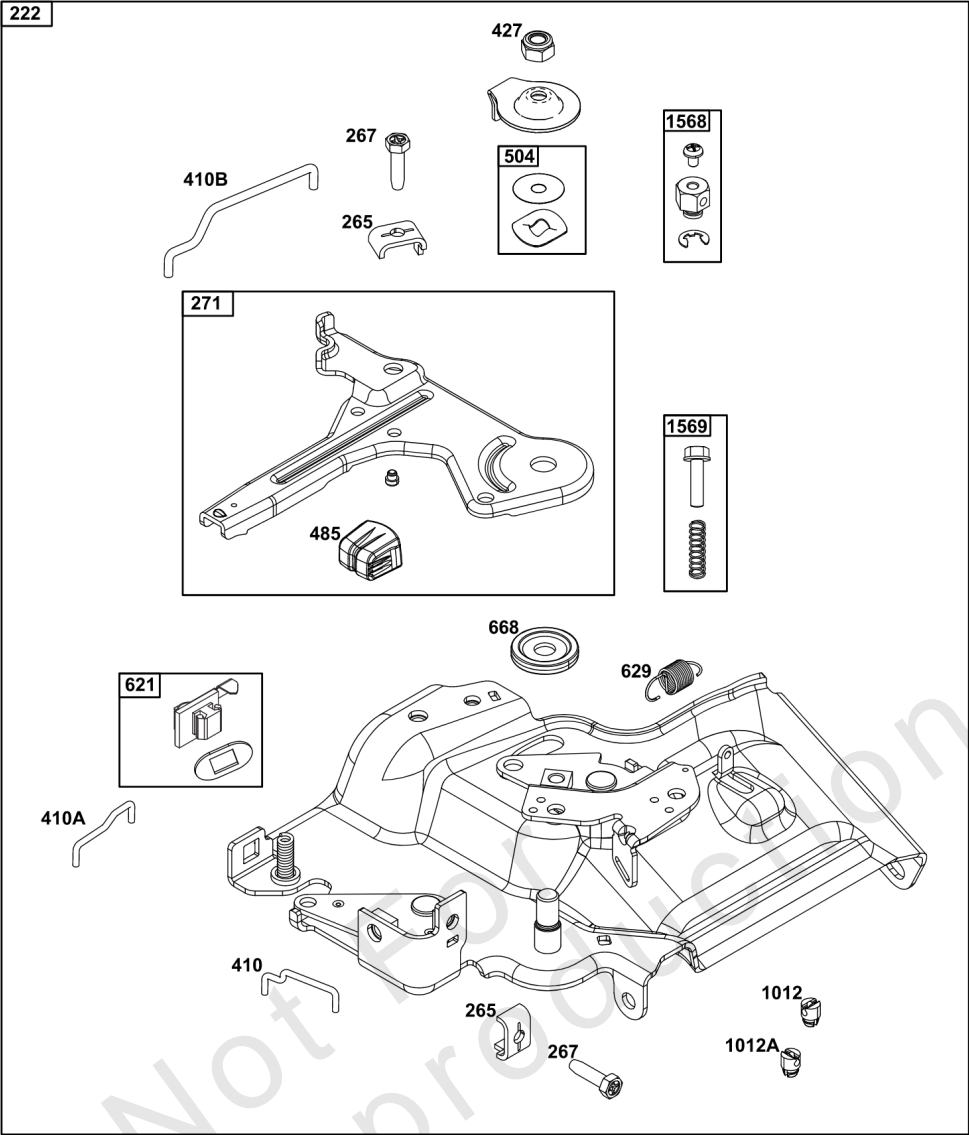
REF NO	PART NO	QTY	DESCRIPTION
304	84004566	1	HOUSING, Blower
305	597078	5	SCREW -(Blower Housing)
703	-----	1	CLIP -(Part information located in Fuel Supply Group.)
1036	-----	1	LABEL, Emissions -(Available from a Briggs & Stratton Authorized Dealer)
1319	794467	1	LABEL, Warning -(REQUIRED When Replacing Parts With Warning Labels Affixed)
1319A	797669	1	LABEL, Warning -(REQUIRED When Replacing Parts With Warning Labels Affixed)
1319B	278911GS	1	LABEL, Warning -(REQUIRED When Replacing Parts With Warning Labels Affixed)





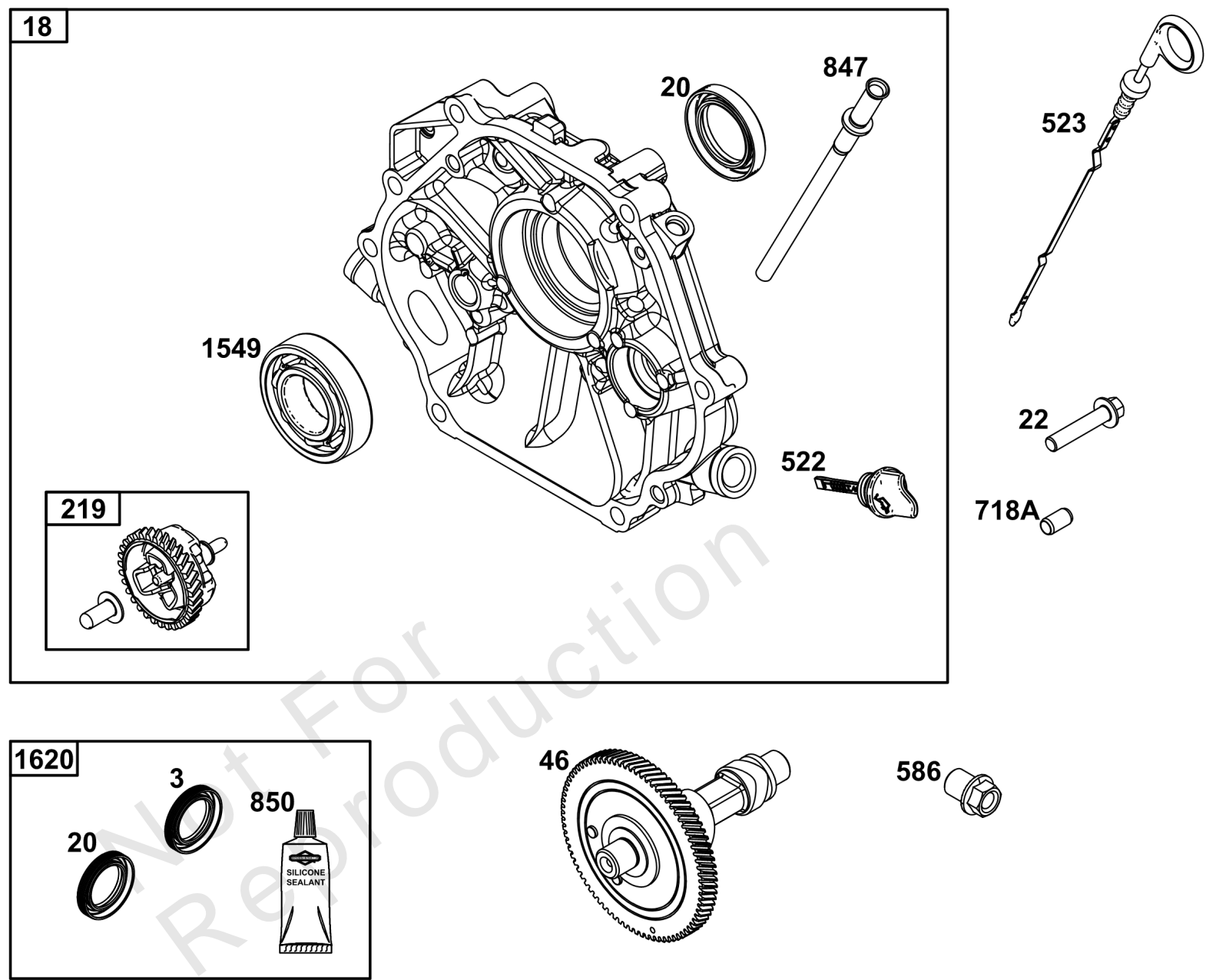
## Carburetor Group

REF NO	PART NO	QTY	DESCRIPTION
38	84004585	2	SCREW -(Fuel Shut Off Valve)
51	-----	1	GASKET, Intake -(Part information located in Cylinder Head Group.)
51A	-----	1	GASKET, Intake -(Part information located in Cylinder Head Group.)
53	84004315	1	STUD -(Carburetor) (Short)
53A	84004311	1	STUD -(Carburetor) (Long)
95	797161	2	SCREW -(Throttle Valve)
98	847139	1	KIT, Idle Speed
98	847139	1	KIT, Idle Speed
104	597533	1	PIN, Float Hinge
105	84004840	1	VALVE, Float Needle
105	84004840	1	VALVE, Float Needle
112	84003640	1	SCREW -(Choke Lever)
117	84004827	1	JET, Main -(Standard)
118	84004163	1	JET, Main -(High Altitude)
121	84004975	1	KIT, Carburetor Overhaul -(Service Kits may include extra parts not specific to this engine.)
122	84004306	1	SPACER, Carburetor
125	84004367	1	CARBURETOR
127	84004841	1	PLUG, Welch
130	84004397	1	VALVE, Throttle
131	84004396	1	SEAL, Choke/Throttle Shaft
133	84004822	1	FLOAT, Carburetor
137	84004205	1	GASKET, Float Bowl
163	84004165	1	GASKET, Air Cleaner
202	-----	1	LINK, Mechanical Governor -(Part information located in Controls Group.)
203	597045	1	CRANK, Bell
205	84005081	1	SCREW -(Bell Crank)
216	84005080	1	LINK, Choke
254	595322	1	DRAIN, Carburetor Bowl
254	595322	1	DRAIN, Carburetor Bowl
276	797632	1	WASHER, Sealing
464	595320	1	SEAL, O-Ring -(Fuel Shut-off Valve)
472	84002963	1	KNOB, Control
633	84004398	1	SEAL, Choke/Throttle Shaft
680	84005074	1	WASHER -(Choke Lever)
951	84004369	1	LEVER, Choke
975	84004204	1	BOWL, Float



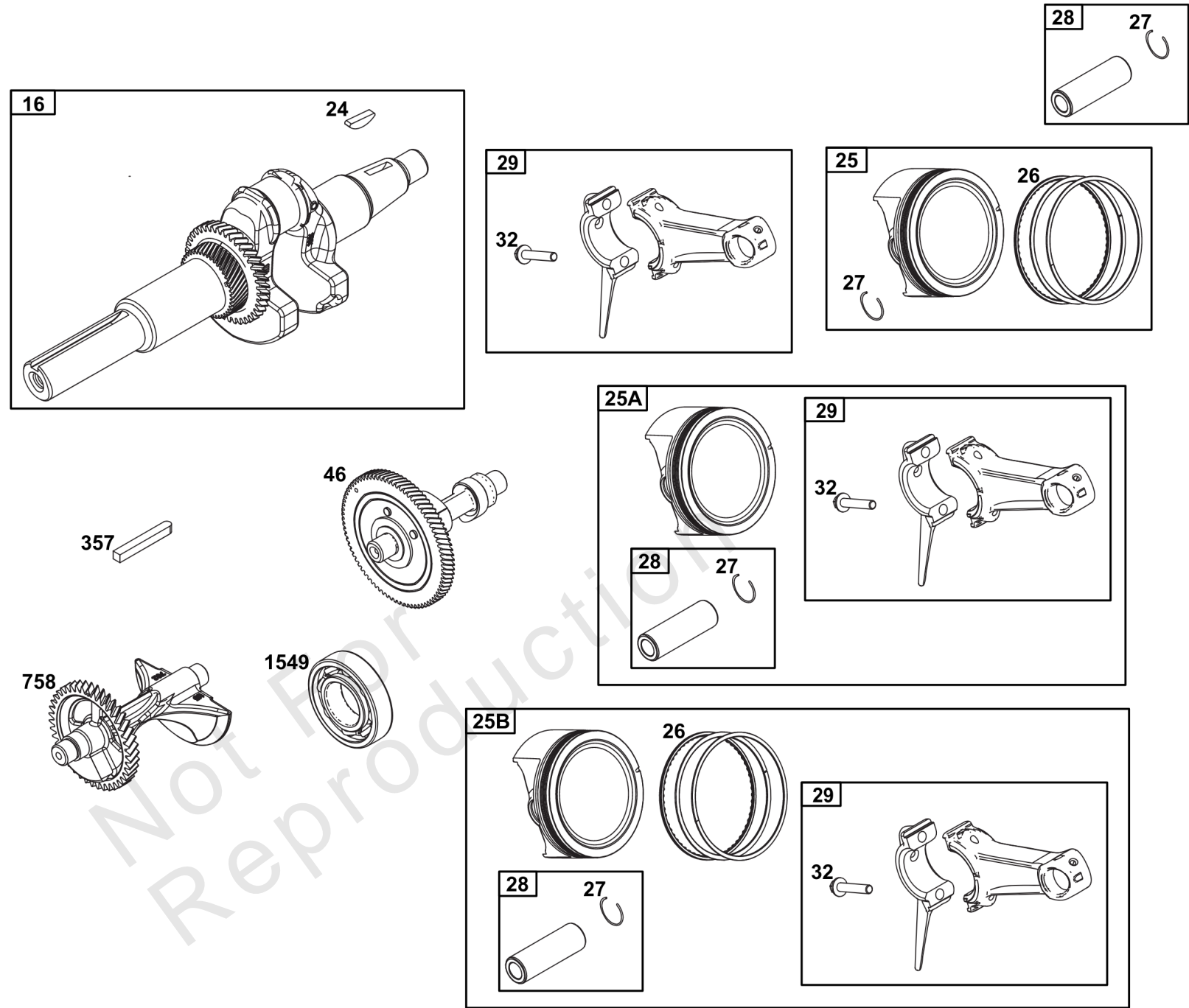
## Controls Group

REF NO	PART NO	QTY	DESCRIPTION
188	590850	1	SCREW -(Control Bracket)
188A	597078	2	SCREW -(Control Bracket)
202	84004199	1	LINK, Mechanical Governor
209	84004151	1	SPRING, Governor
211	691278	1	SPRING, Governor
222	84004377	1	BRACKET, Control
227	84004195	1	LEVER, Governor Control
265	691024	2	CLAMP, Casing
265A	84004472	1	CLAMP, Casing
267	597027	2	SCREW -(Casing Clamp)
267A	84004279	1	SCREW -(Casing Clamp)
271	84005003	1	LEVER, Control
281	84004262	1	PANEL, Control
286	84002122	1	MODULE, Oil Sensor
410	84004137	1	LINK, Control
410A	84004131	1	LINK, Control
410B	84004149	1	LINK, Control
427	84004395	1	NUT -(Control Bracket)
485	84002965	1	KNOB, CONTROL
504	84004943	1	SET, Friction Washer
505	590641	1	NUT -(Governor Control Lever)
562	597121	1	BOLT -(Governor Control Lever)
586	-----	1	NUT -(Part information located in Crankcase Cover/Sump and Lubrication Group.)
621	84007989	1	SWITCH, Stop
629	84004146	1	SPRING, Throttle Return
663	84004256	1	SCREW -(Control Panel)
663A	597460	1	SCREW -(Control Panel)
668	84004140	1	SPACER
1012	84004145	3	RETAINER, Link
1012A	84004144	2	RETAINER, Link
1054	280275	1	TIE, Cable
1305	590850	1	SCREW -(Oil Sensor Module)
1515	590692	3	NUT -(Control Panel)
1568	84005001	2	RETAINER, Wire
1569	84005002	1	KIT, Fixed Speed
1571	84004201	1	BRACKET, Governed Idle Spring
1572	597036	1	SCREW -(Governed Idle Spring Bracket)



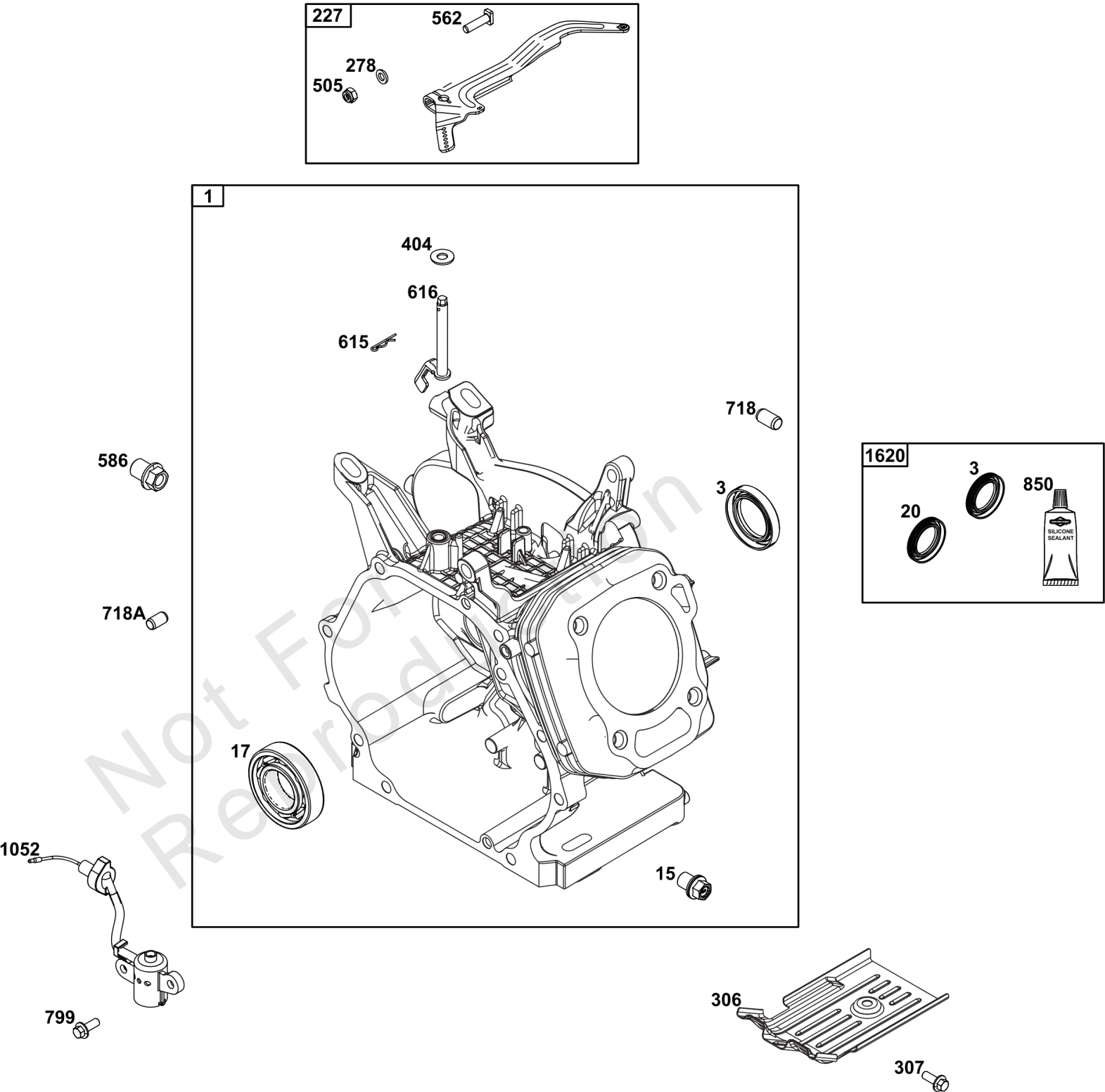
## ***Crankcase Cover/Sump and Lubrication Group***

REF NO	PART NO	QTY	DESCRIPTION
3	-----	1	SEAL, Oil -(Part information located in Cylinder Group.)
18	84004477	1	COVER, Crankcase
20	84004101	1	SEAL, Oil -(PTO Side)
22	84004103	7	SCREW -(Crankcase Cover/Sump)
46	-----	1	CAMSHAFT -(Part information located in Crankshaft Group.)
219	84004200	1	GEAR, Governor
522	84004104	2	PLUG, Dipstick/Fill
523	84004105	1	DIPSTICK
586	84004724	1	NUT -(Oil Sensor)
718A	-----	2	PIN, Locating -(Part information located in Cylinder Group.)
847	84004831	1	DIPSTICK/TUBE ASSEMBLY
850	-----	1	SEALANT, Liquid -(Part information located in Cylinder Group.)
1549	-----	1	BEARING, Ball -(Part information located in Crankshaft Group.)
1620	84008367	1	GASKET SET, Crankcase



## Crankshaft Group

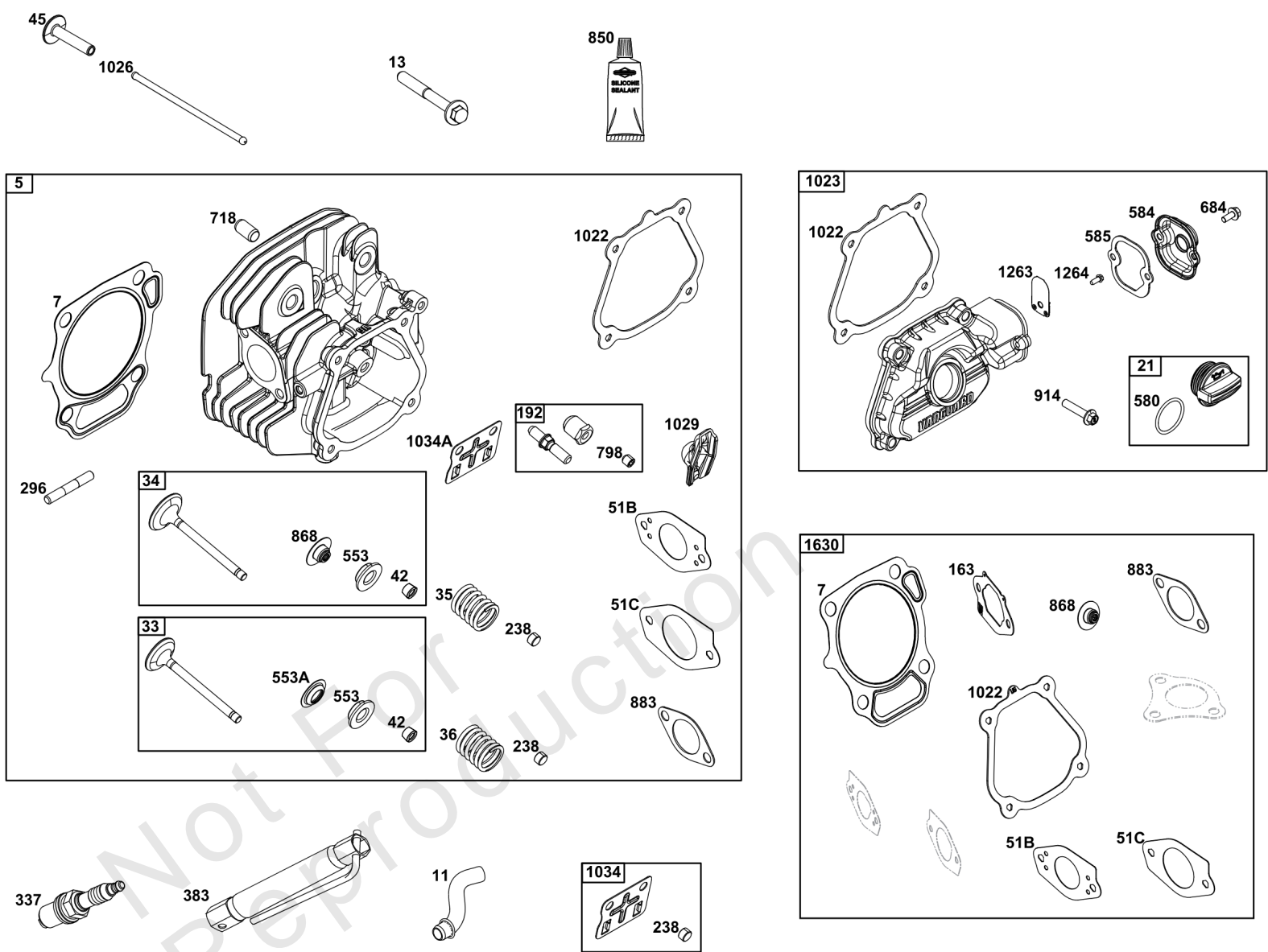
REF NO	PART NO	QTY	DESCRIPTION
16	84003577	1	CRANKSHAFT
24	596976	1	KEY, Flywheel
25	84005038	1	PISTON ASSEMBLY -(Use After Date Code 20120700)
25	84005037	1	PISTON ASSEMBLY -(.020" Oversize) (Use After Date Code 20120700)
25A	84006577	1	PISTON ASSEMBLY -(Use Before Date Code 20120800)
25B	84006578	1	PISTON ASSEMBLY -(.020" Oversize) (Use Before Date Code 20120800)
26	84004091	1	SET, Ring
26	84004097	1	SET, Ring -(.020" Oversize)
27	84005040	2	LOCK, Piston Pin
28	84005039	1	PIN, Piston -(Use After Date Code 20120700)
29	84005041	1	ROD, Connecting -(Use After Date Code 20120700)
32	596984	2	SCREW -(Connecting Rod)
46	84005044	1	CAMSHAFT
357	590960	1	KEY, Drive Pulley
758	84004464	1	COUNTERWEIGHT
1549	84003459	1	BEARING, BALL -(Crankshaft)





## Cylinder Group

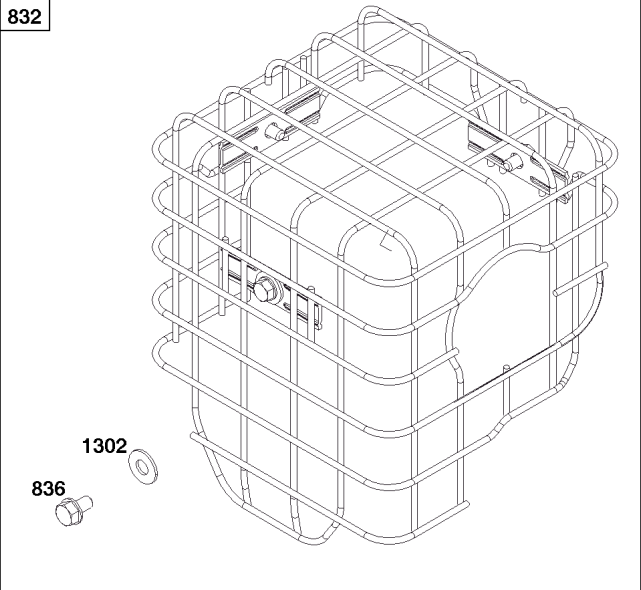
REF NO	PART NO	QTY	DESCRIPTION
1	84004371	1	CYLINDER ASSEMBLY
3	84004101	1	SEAL, Oil -(Magneto Side)
15	84004108	2	PLUG, Oil Drain
17	84004100	1	BEARING, Ball -(Cylinder)
20	-----	1	SEAL, Oil -(Part information located in Crankcase Cover/Sump and Lubrication Group.)
227	-----	1	LEVER, Governor Control -(Part information located in Controls Group.)
278	-----	1	WASHER -(Part information located in Controls Group.)
306	84004123	1	SHIELD, Cylinder
307	590850	1	SCREW -(Cylinder Shield)
404	84004197	1	WASHER -(Governor Crank)
505	-----	1	NUT -(Part information located in Controls Group.)
562	-----	1	BOLT -(Part information located in Controls Group.)
586	-----	1	NUT -(Part information located in Crankcase Cover/Sump and Lubrication Group.)
615	84004198	1	RETAINER, Governor Shaft
616	84004196	1	CRANK, Governor
718	84004120	2	PIN, Locating
718A	590713	2	PIN, Locating
799	590703	2	SCREW -(Oil Sensor)
850	100106	1	SEALANT, Liquid
1052	590671	1	SENSOR, Oil
1620	-----	1	GASKET SET, Crankcase -(Part information located in Crankcase Cover/Sump Group.)



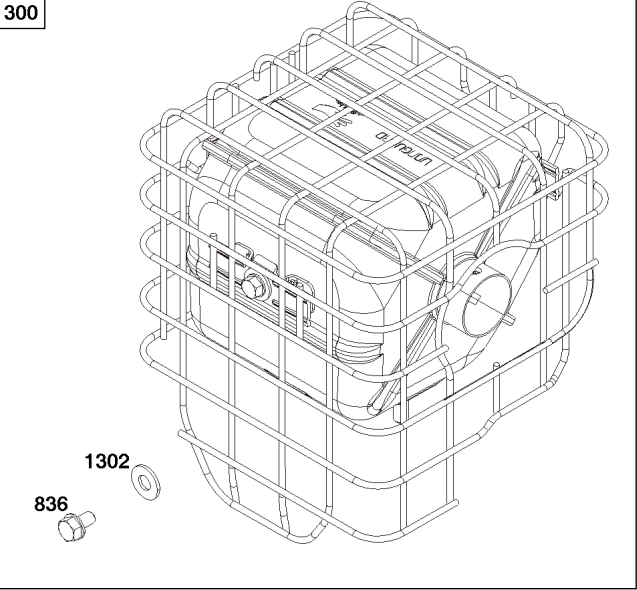
## Cylinder Head Group

REF NO	PART NO	QTY	DESCRIPTION
5	84005042	1	HEAD, Cylinder
7	84004760	1	GASKET, Cylinder Head
11	84004125	1	TUBE, Breather
13	84004122	4	SCREW -(Cylinder Head)
21	597014	1	CAP, Oil Fill
33	84004114	1	VALVE, Exhaust
34	84004113	1	VALVE, Intake
35	84004112	2	SPRING, Valve -(Intake)
36	84004112	2	SPRING, Valve -(Exhaust)
42	84004116	4	KEEPER, Valve
45	84004130	2	TAPPET, Valve
51B	84004164	1	GASKET, Intake
51C	84004166	1	GASKET, Intake
163	-----	1	GASKET, Air Cleaner -(Part information located in Carburetor Group.)
192	597006	2	ADJUSTER, Rocker Arm
238	84004109	2	CAP, Valve
296	84004119	2	STUD -(Muffler)
337	597383	1	PLUG, Spark
383	19576S	1	WRENCH, Spark Plug
553	84004117	2	RETAINER, Valve Spring
553A	84004118	1	RETAINER, Valve Spring
580	809894	1	SEAL, O-Ring -(Oil Fill Cap)
584	597011	1	COVER, Breather Passage
585	597010	1	GASKET, Breather Passage
684	597012	2	SCREW -(Breather Passage Cover)
718	-----	2	PIN, Locating -(Part information located in Cylinder Group.)
798	597000	2	SCREW -(Rocker Arm)
850	-----	1	SEALANT, Liquid -(Part information located in Cylinder Group.)
868	84004111	1	SEAL, Valve
883	-----	1	GASKET, Exhaust -(Part information located in Exhaust Group.)
914	597016	4	SCREW -(Rocker Cover)
1022	84004126	1	GASKET, Rocker Cover
1023	84004124	1	COVER, Rocker
1026	84004129	2	ROD, Push
1029	84004110	2	ARM, Rocker
1034	84006550	1	GUIDE, Push Rod -Used Before Code Date 20092400
1034A	84005043	1	GUIDE, Push Rod -Used After Code Date 20092300
1263	697124	1	REED, Breather
1264	793453	1	SCREW -(Breather Reed)
1630	84012627	1	GASKET SET, Valve -(Service Kits can include parts not for this engine.)

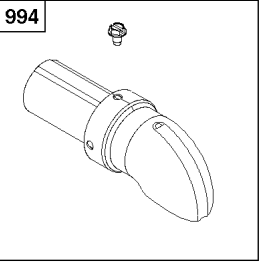
832



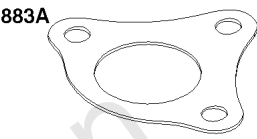
300



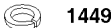
994



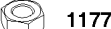
883A



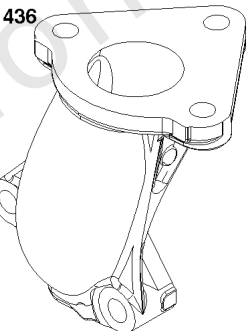
1449



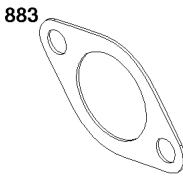
1177



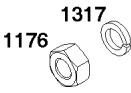
436



883



1317



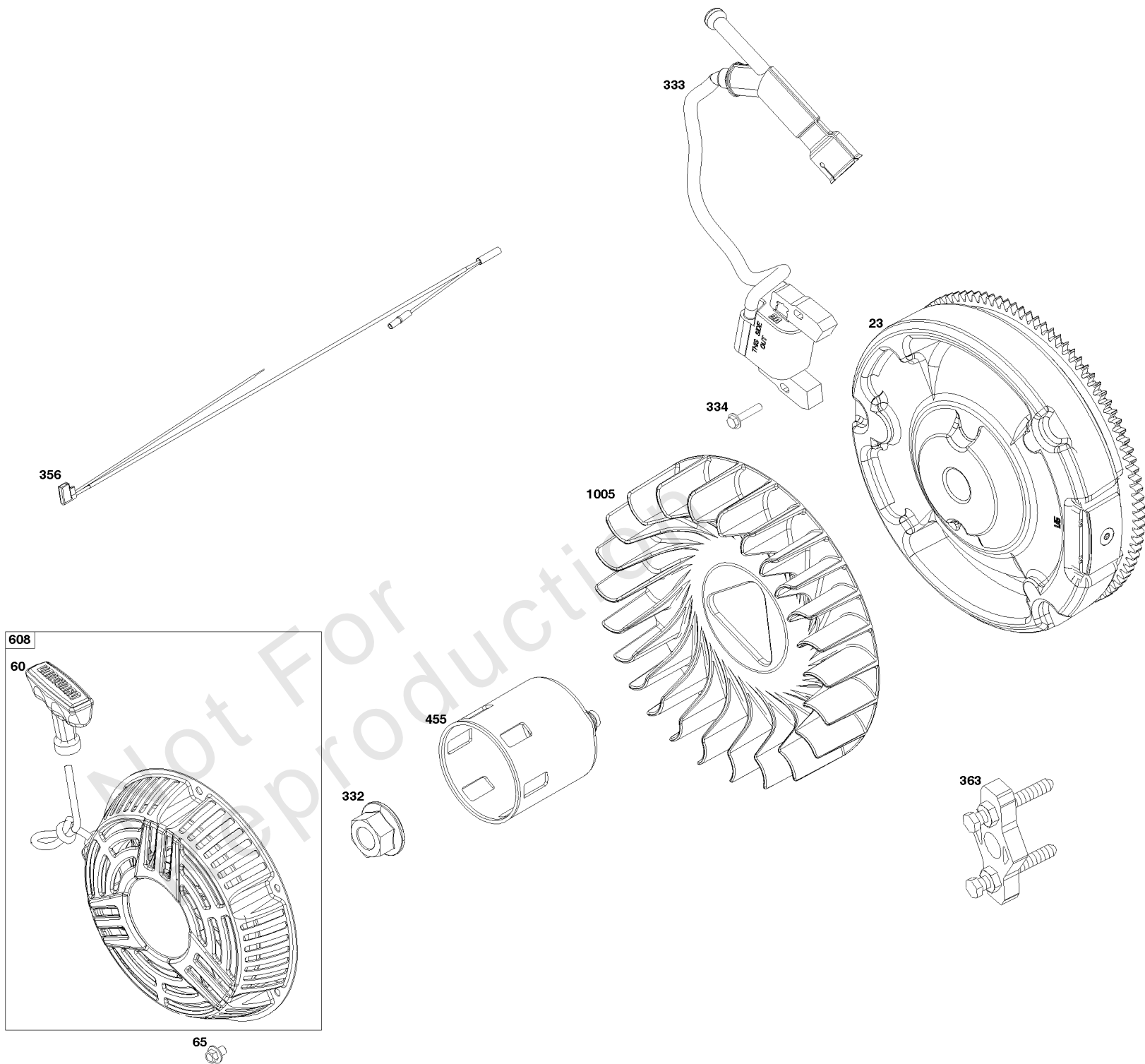
1176



Not For Reproduction

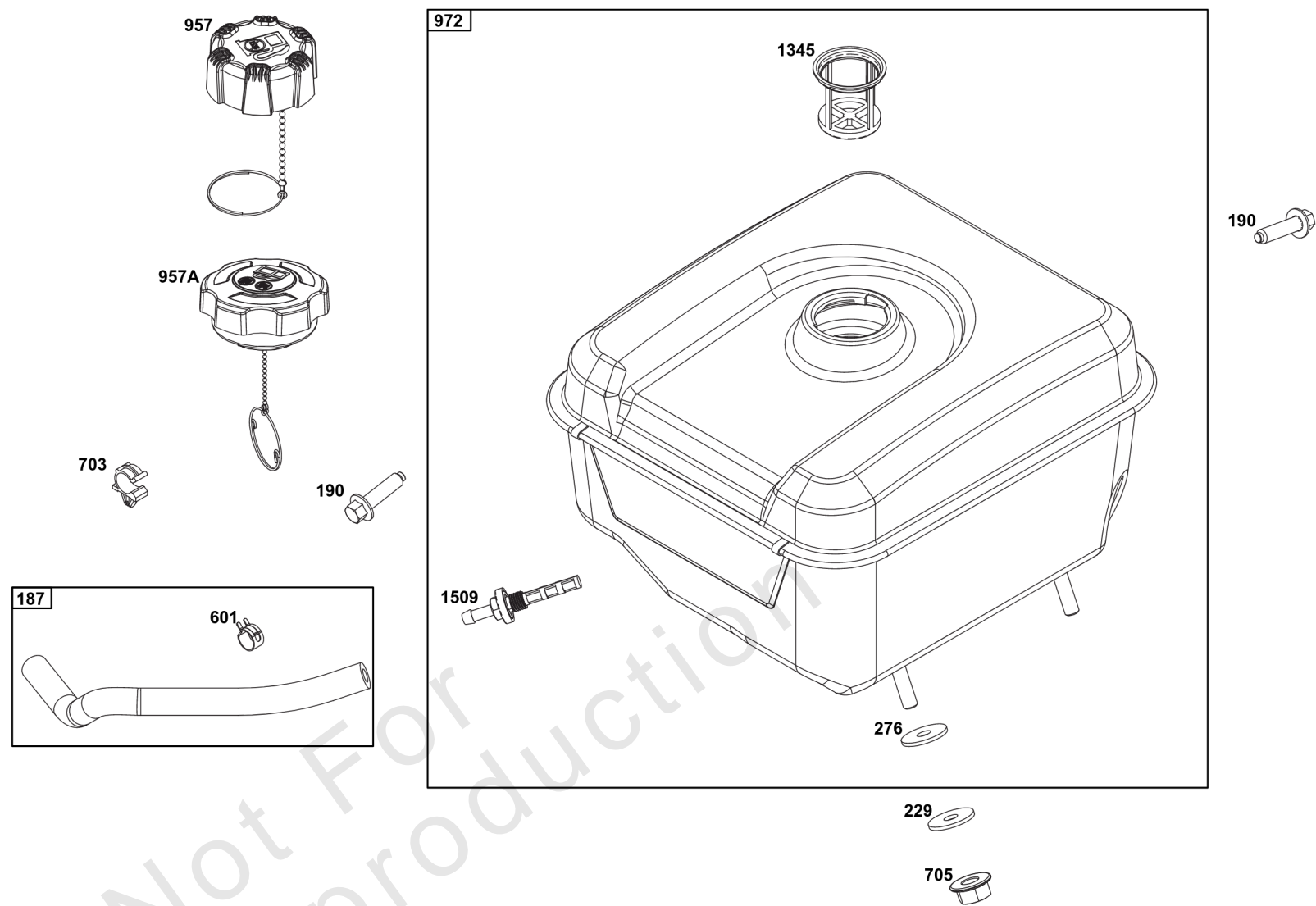
## ***Exhaust Group***

REF NO	PART NO	QTY	DESCRIPTION
300	84004467	1	MUFFLER
436	84004461	1	MANIFOLD, Exhaust
832	84004465	1	GUARD, Muffler
836	699491	3	SCREW -(Muffler Guard)
883A	84004280	1	GASKET, Exhaust
883	84004409	1	GASKET, Exhaust
994	593207	1	ARRESTOR, Spark
1176	590632	2	NUT -(Exhaust Manifold)
1177	590632	3	NUT -(Muffler)
1302	84004197	3	WASHER -(Muffler Guard)
1317	590633	2	WASHER -(Exhaust Manifold)
1449	590633	3	WASHER -(Muffler)



### ***Flywheel, Ignition, and Starter Group***

REF NO	PART NO	QTY	DESCRIPTION
23	84004284	1	FLYWHEEL
60	597080	1	GRIP, Starter Rope
65	590683	3	SCREW -(Rewind Starter)
332	591988	1	NUT -(Flywheel)
333	84004162	1	ARMATURE, Magneto
334	699477	2	SCREW -(Magneto Armature)
356	84004209	1	WIRE, Stop
363	19203	1	PULLER, Flywheel
455	84004287	1	CUP, Flywheel
608	84004174	1	STARTER, Rewind
1005	84004286	1	FAN, Flywheel





## ***Fuel Supply Group***

REF NO	PART NO	QTY	DESCRIPTION
187	84004224	1	LINE, Fuel
190	84004226	2	SCREW -(Fuel Tank)
229	84004227	2	WASHER -(Fuel Tank)
276	84004253	2	WASHER, Sealing
601	791850	2	CLAMP, Hose
703	590967	1	CLIP
705	707919	2	NUT -(Fuel Tank)
957	596765	1	CAP, Fuel Tank -Used Before Code Date 22010100
957A	84007570	1	CAP, Fuel Tank -Used After Code Date 21123100
972	84004212	1	TANK, Fuel
1345	792917	1	FILTER, Filler Neck
1509	797346	1	OUTLET, Tank

*Replacement Engine - US & Canada*

REF NO	PART NO	QTY	DESCRIPTION
	25V3320005F1	1	Replacement Engine
	-----		Idle Speed: 1450
	-----		Top No-Load Speed: 3600

Not For Reproduction

