



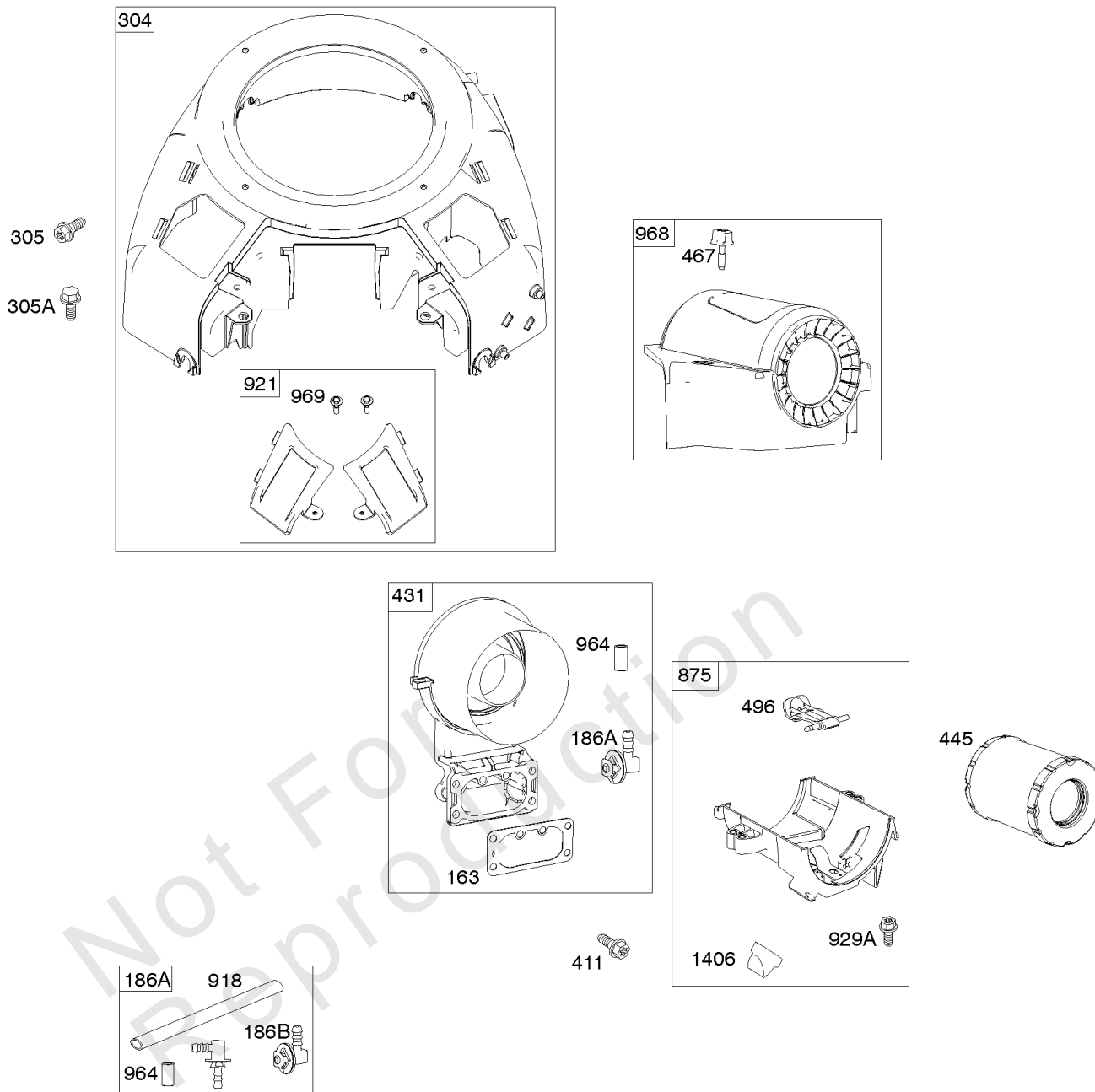
# Parts Manual

Mfg. No: 49T777-0004-G1



| <b>Model Components</b>                                     | <b>Page</b> |
|---|-------------|
| Blower Housing, Air Cleaner. ....                           | 4           |
| Carburetor, Fuel Supply. ....                               | 6           |
| Cylinder Head, Rocker Arm Cover, Intake Manifold. ....      | 10          |
| Cylinder, Crankshaft, Camshaft, Air Guides. ....            | 14          |
| ECU Module. ....  | 18          |
| Engine Sump, Lubrication, Oil Cooler. ....                  | 20          |
| Engine/Valve Gasket Set, Carburetor Overhaul Kit. ....      | 22          |
| Flywheel, Controls, Wire Harness, Alternator, Starter. .... | 24          |
| Replacement Engine - US & Canada. ....                      | 26          |
| Model 40, 44 & 49 Engine Accessories Catalog. ....          | 27          |
| Maintenance Kits. ....                                      | 28          |
| Engine Mounted Below Deck Mufflers. ....                    | 30          |
| Engine Mounted Above Deck Mufflers. ....                    | 32          |
| Spark Arrester/Deflector. ....                              | 34          |
| Lubrication. ....   | 36          |
| Implement Mounted Above Deck Mufflers. ....                 | 38          |
| Exhaust/Muffler Configurations. ....                        | 40          |
| Electrical. ....  | 42          |
| Flywheel Guards. ....                                       | 44          |
| Speed Control. ....   | 46          |
| Muffler Mounting Hardware. ....                             | 48          |

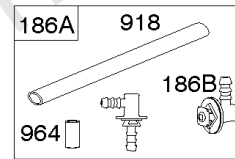
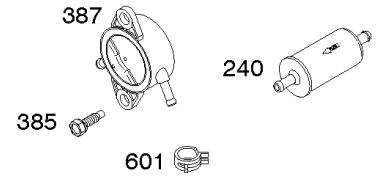
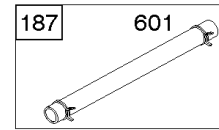
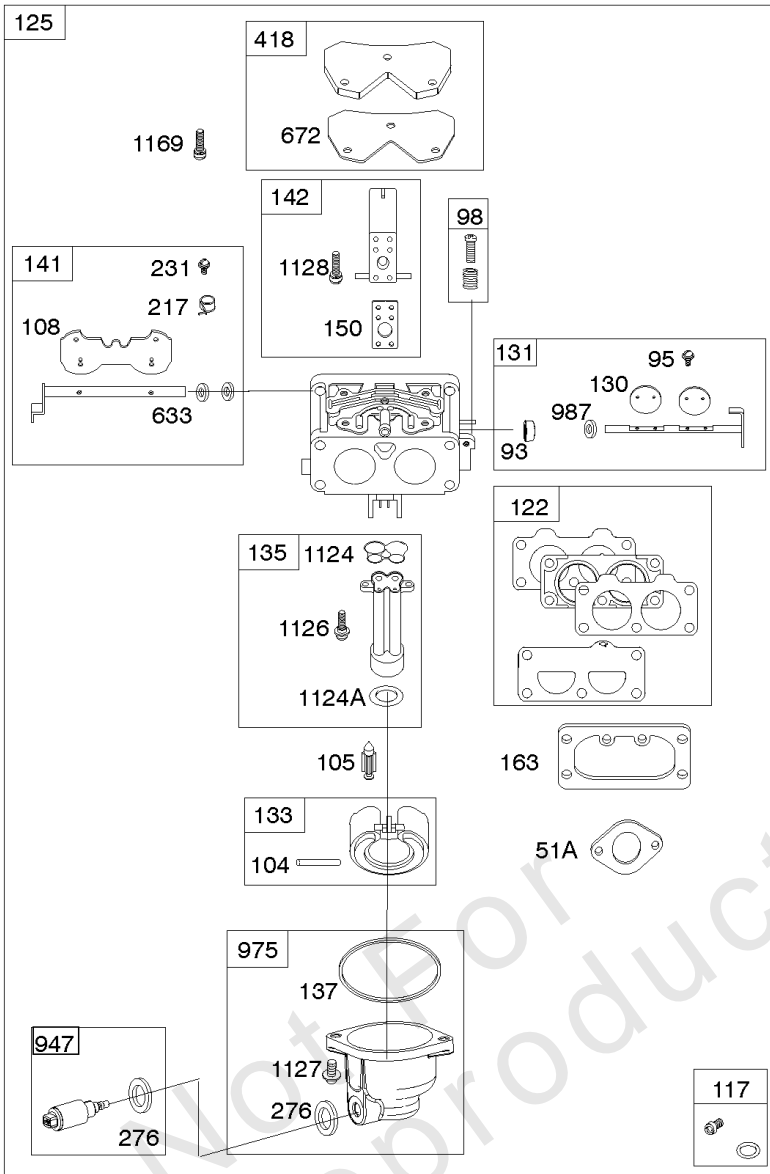
Not For  
Reproduction





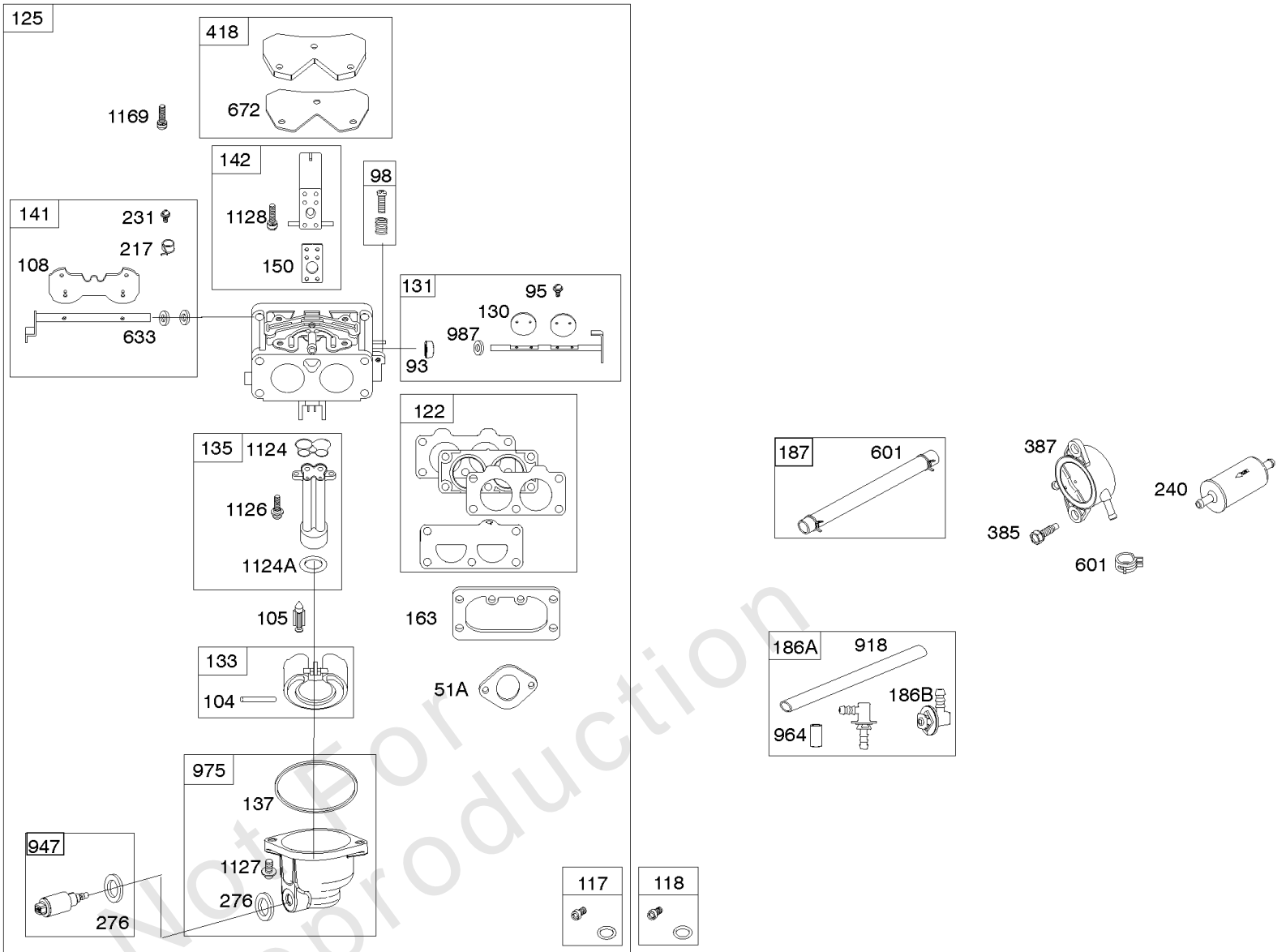
## Blower Housing, Air Cleaner

| REF NO | PART NO | QTY | DESCRIPTION   |
|--------|---------|-----|---|
| 163    | 691001  |     | GASKET, Air Cleaner   |
| 186A   | 799158  |     | CONNECTOR, Hose<br>-(EVAP)                                    |
| 186B   | 845141  |     | CONNECTOR, Hose<br>-(EVAP)                                    |
| 304    | 799957  |     | HOUSING, Blower   |
| 305    | 691005  |     | SCREW<br>-(Blower Housing)                                    |
| 305A   | 557049  |     | SCREW<br>-(Blower Housing) Blower Housing To Air Cleaner Base |
| 411    | 698304  |     | SCREW<br>-(Air Cleaner Base to Air Cleaner Bracket)           |
| 431    | 799097  |     | ELBOW, Intake   |
| 445    | 798897  |     | FILTER, A/C Cartridge   |
| 467    | 790697  |     | KNOB, Air Cleaner Cover                                       |
| 496    | 799095  |     | LEVER, Air Cleaner Filter                                     |
| 875    | 799094  |     | BASE, Air Cleaner   |
| 918    | 799160  |     | HOSE, Vacuum  |
| 921    | 592782  |     | COVER, Blower Housing   |
| 929A   | 794904  |     | SCREW<br>-(Choke Control Bracket)                             |
| 964    | 799159  |     | CAP, Connector  |
| 968    | 799102  |     | COVER, Air Cleaner  |
| 969    | 799093  |     | SCREW<br>-(Blower Housing Cover)                              |
| 1406   | 799096  |     | VALVE, Debris   |



## Carburetor, Fuel Supply

| REF NO | PART NO | QTY | DESCRIPTION   |
|--------|---------|-----|---|
| 51A    | 690949  |     | GASKET, Intake  |
| 93     | 845864  |     | BUSHING, Throttle Shaft                                     |
| 95     | 690718  |     | SCREW<br>-(Throttle Valve)                                  |
| 98     | 699721  |     | KIT, Idle Speed   |
| 104    | 694918  |     | PIN, Float Hinge  |
| 105    | 808798  |     | VALVE, Float Needle   |
| 108    | 699723  |     | VALVE, Choke  |
| 117    | 842082  |     | JET, Main<br>-(Standard)                                    |
| 118    | 842081  |     | JET, Main<br>-(High Altitude)                               |
| 122    | 798759  |     | SPACER, Carburetor  |
| 125    | 799511  |     | CARBURETOR  |
| 130    | 796875  |     | VALVE, Throttle   |
| 131    | 796872  |     | KIT, Throttle Shaft   |
| 133    | 699724  |     | FLOAT, Carburetor   |
| 135    | 699729  |     | TUBE, Fuel Transfer   |
| 137    | 690994  |     | GASKET, Float Bowl  |
| 141    | 799112  |     | KIT, Choke Shaft  |
| 142    | 796871  |     | NOZZLE, Carburetor  |
| 150    | 841649  |     | GASKET, Nozzle  |
| 163    | 691001  |     | GASKET, Air Cleaner   |
| 186A   | 799158  |     | CONNECTOR, Hose<br>-(EVAP)                                  |
| 186B   | 845141  |     | CONNECTOR, Hose<br>-(EVAP)                                  |
| 187    | 791766  |     | LINE, Fuel<br>-(Cut To Required Length)                     |
| 217    | 799771  |     | SPRING, Choke Return  |
| 231    | 690718  |     | SCREW<br>-(Choke Valve)                                     |
| 240    | 695666  |     | FILTER, Fuel  |
| 276    | 695410  |     | WASHER, Sealing   |
| 385    | 797409  |     | SCREW<br>-(Fuel Pump) (Fuel Pump Mounted To Blower Housing) |
| 387    | 808656  |     | PUMP, Fuel  |
| 418    | 795912  |     | PLATE, Carburetor Cover                                     |
| 601    | 691038  |     | CLAMP, Hose   |
| 633    | 690722  |     | SEAL, Choke/Throttle Shaft                                  |
| 672    | 690234  |     | GASKET, Carburetor Plate                                    |
| 918    | 799160  |     | HOSE, Vacuum  |
| 947    | 798779  |     | SOLENOID, Fuel  |
| 964    | 799159  |     | CAP, Connector  |
| 975    | 799114  |     | BOWL, Float   |
| 987    | 808183  |     | SEAL, Choke/Throttle Shaft                                  |
| 1124   | 690988  |     | SEAL, O-Ring<br>-(Fuel Transfer Tube)                       |
| 1124A  | 841653  |     | SEAL, O-Ring<br>-(Fuel Transfer Tube)                       |
| 1126   | 690991  |     | SCREW<br>-(Fuel Transfer Tube)                              |
| 1127   | 695407  |     | SCREW<br>-(Float Bowl) (Float Bowl to Carburetor Body)      |
| 1128   | 690990  |     | SCREW<br>-(Carburetor Nozzle)                               |



## Carburetor, Fuel Supply

---

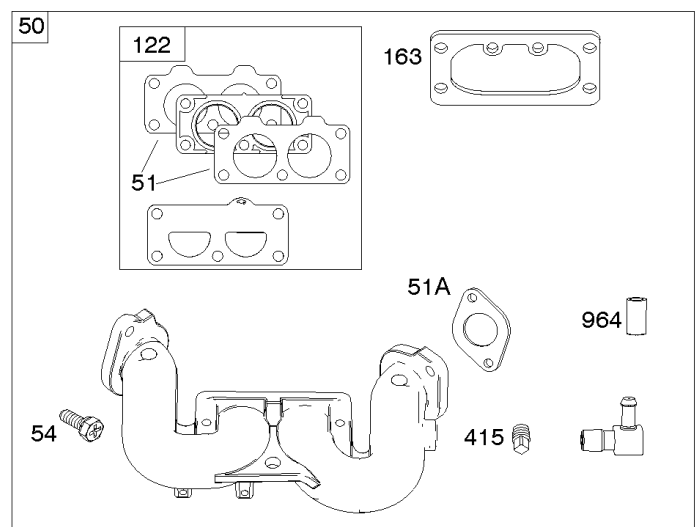
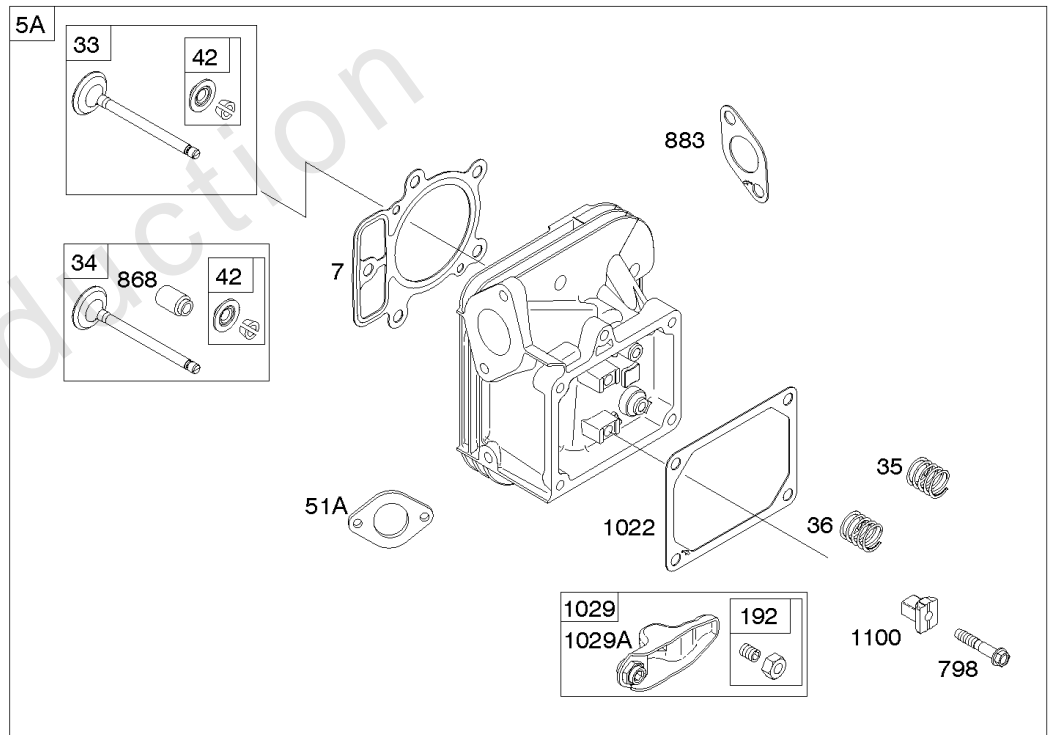
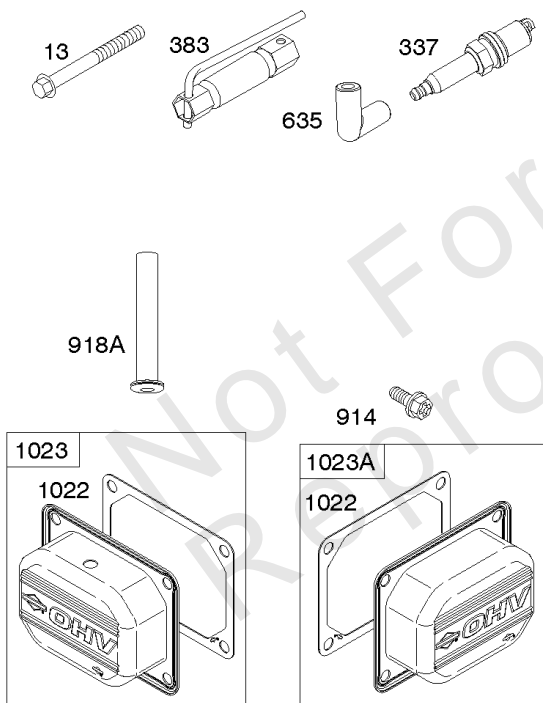
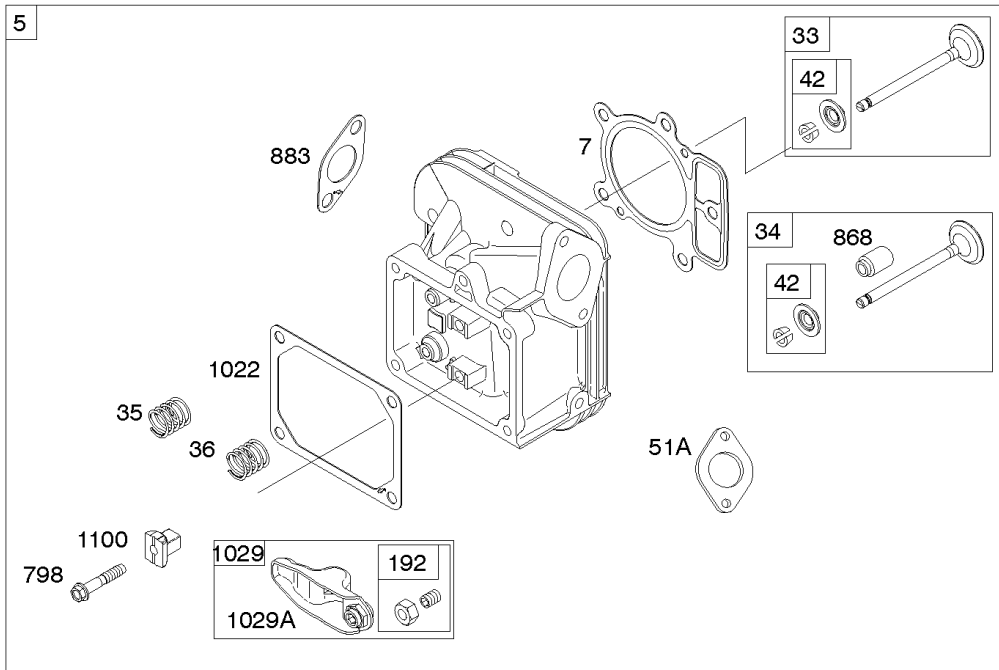
| REF NO | PART NO | QTY | DESCRIPTION                        |
|--------|---------|-----|------------------------------------|
| 1169   | 690990  |     | SCREW<br>-(Carburetor Cover Plate) |

---

Not For Reproduction

# Cylinder Head, Rocker Arm Cover, Intake Manifold

Mfg. No: 49T777-0004-G1

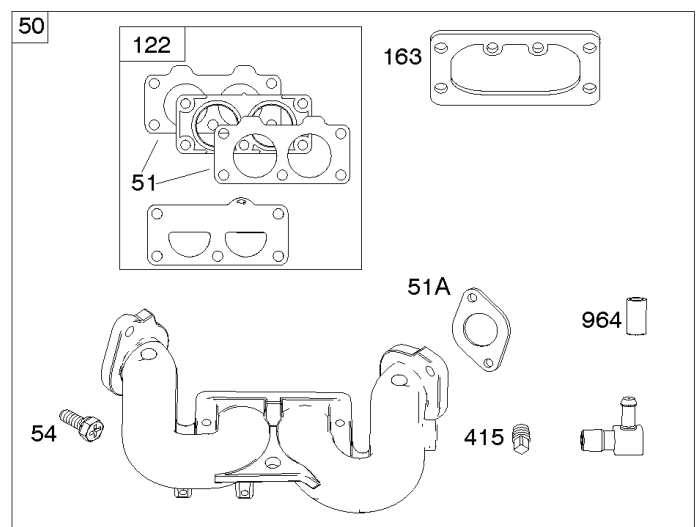
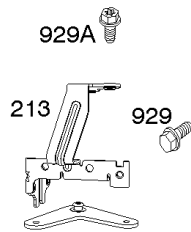
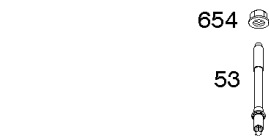
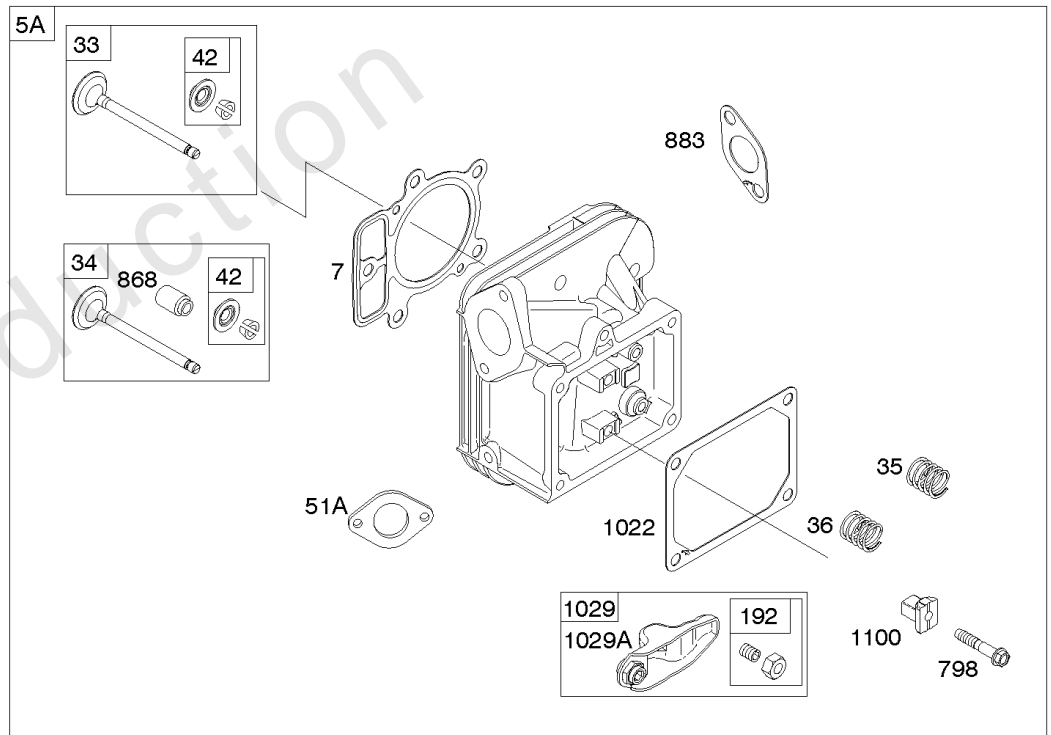
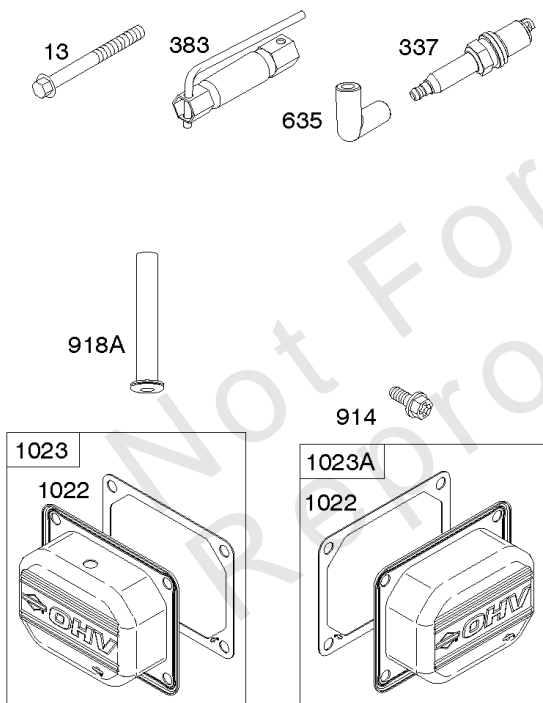
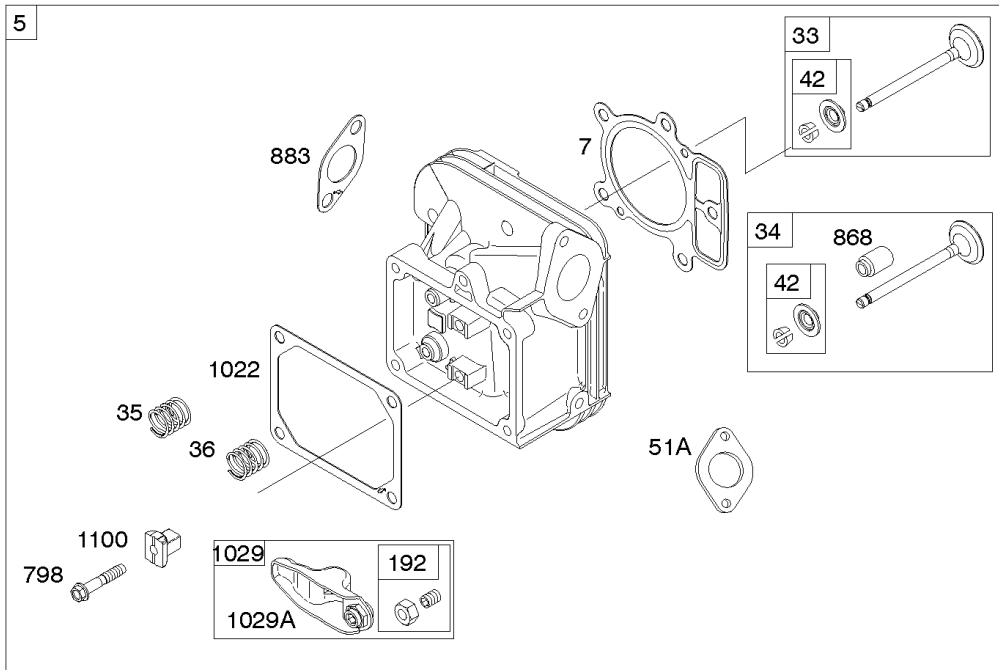


## Cylinder Head, Rocker Arm Cover, Intake Manifold

| REF NO | PART NO | QTY | DESCRIPTION                                     |
|--------|---------|-----|---|
| 5      | 799088  |     | HEAD, Cylinder<br>-(Cylinder #1)                |
| 5A     | 799089  |     | HEAD, Cylinder<br>-(Cylinder #2)                |
| 7      | 796851  |     | GASKET, Cylinder Head                           |
| 13     | 793988  |     | SCREW<br>-(Cylinder Head)                       |
| 33     | 793557  |     | VALVE, Exhaust                                  |
| 34     | 793556  |     | VALVE, Intake                                   |
| 35     | 694865  |     | SPRING, Valve<br>-(Intake)                      |
| 36     | 694865  |     | SPRING, Valve<br>-(Exhaust)                     |
| 42     | 499586  |     | KEEPER, Valve                                   |
| 45     | 690977  |     | TAPPET, Valve                                   |
| 50     | 797503  |     | MANIFOLD, Intake                                |
| 51     | 796876  |     | GASKET, Intake                                  |
| 51A    | 690949  |     | GASKET, Intake                                  |
| 53     | 690951  |     | STUD<br>-(Carburetor)                           |
| 54     | 699816  |     | SCREW<br>-(Intake Manifold)                     |
| 122    | 798759  |     | SPACER, Carburetor                              |
| 163    | 691001  |     | GASKET, Air Cleaner                             |
| 192    | 690083  |     | ADJUSTER, Rocker Arm                            |
| 213    | 799510  |     | BRACKET, Choke Control                          |
| 337    | 792015  |     | PLUG, Spark                                     |
| 383    | 19576S  |     | WRENCH, Spark Plug                              |
| 415    | 794903  |     | PLUG<br>-(Sump)                                 |
| 613    | 690341  |     | SCREW<br>-(Muffler)                             |
| 635    | 692076  |     | BOOT, Spark Plug                                |
| 654    | 690958  |     | NUT<br>-(Carburetor)                            |
| 798    | 697890  |     | SCREW<br>-(Rocker Arm)                          |
| 868    | 690968  |     | SEAL, Valve                                     |
| 883    | 690970  |     | GASKET, Exhaust                                 |
| 914    | 691127  |     | SCREW<br>-(Rocker Cover)                        |
| 918A   | 596163  |     | HOSE, Vacuum<br>-Used Before Code Date 19091800 |
| 918A   | 593641  |     | HOSE, Vacuum<br>-Used After Code Date 19091700  |
| 929    | 691003  |     | SCREW<br>-(Choke Control Bracket)               |
| 929A   | 794904  |     | SCREW<br>-(Choke Control Bracket)               |
| 964    | 799159  |     | CAP, Connector                                  |
| 1022   | 690971  |     | GASKET, Rocker Cover                            |
| 1023   | 793146  |     | COVER, Rocker<br>-(Cylinder #1)                 |
| 1023A  | 499600  |     | COVER, Rocker<br>-(Cylinder #2)                 |
| 1026   | 690981  |     | ROD, Push<br>-(Steel)                           |

# Cylinder Head, Rocker Arm Cover, Intake Manifold

Mfg. No: 49T777-0004-G1

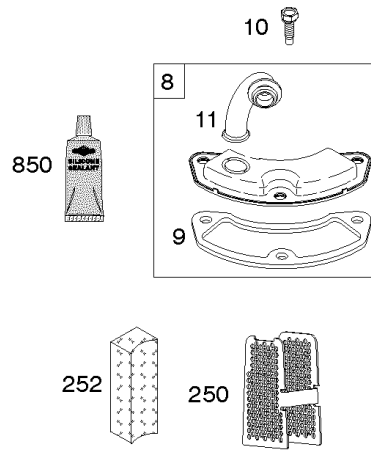
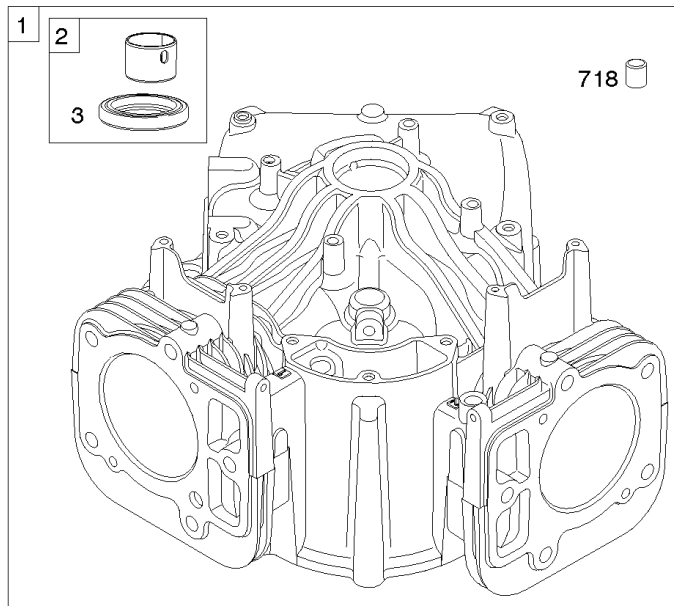




## ***Cylinder Head, Rocker Arm Cover, Intake Manifold***

| <b>REF NO</b> | <b>PART NO</b> | <b>QTY</b> | <b>DESCRIPTION</b>       |
|---------------|----------------|------------|--------------------------|
| 1026A         | 690982         |            | ROD, Push<br>-(Aluminum) |
| 1029          | 690972         |            | ARM, Rocker              |
| 1029A         | 807323         |            | ARM, Rocker              |
| 1100          | 791959         |            | PIVOT, Rocker Arm        |

Not For Reproduction



1319 WARNING LABEL

**WARNING**  
 Read and follow Operating Instructions before starting engine.  
 Operate in a well-ventilated area. Do not breathe the fumes.  
 Do not drink alcohol before or while operating the engine.  
 Do not operate the engine in an enclosed space.  
 Do not use the engine for any purpose other than that intended.  
 Do not touch hot parts.

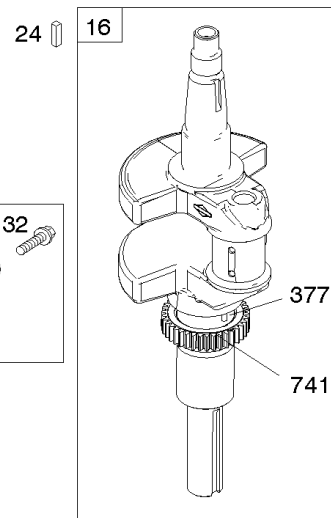
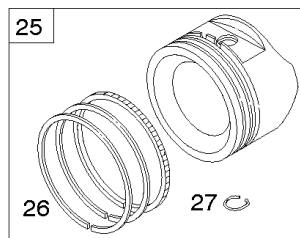
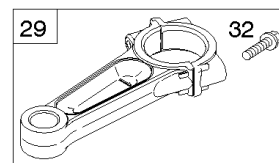
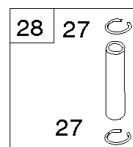
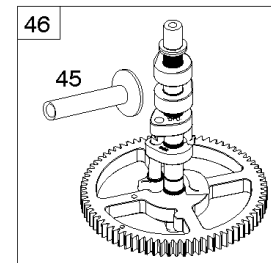
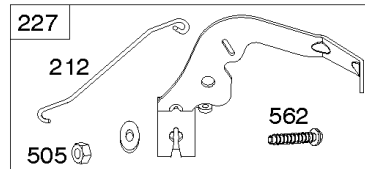
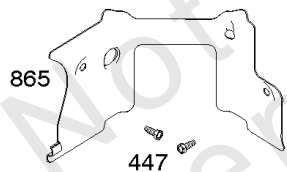
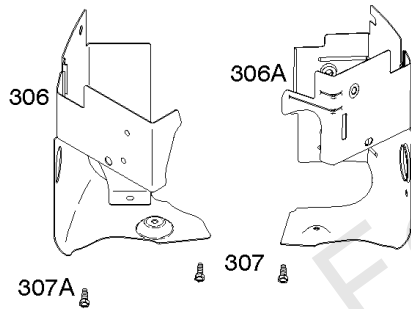
**REQUIRED** when replacing parts with warning labels affixed.

1319A WARNING LABEL

**REQUIRED** when replacing parts with warning labels affixed.

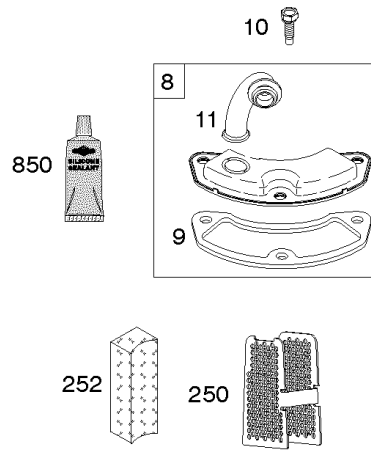
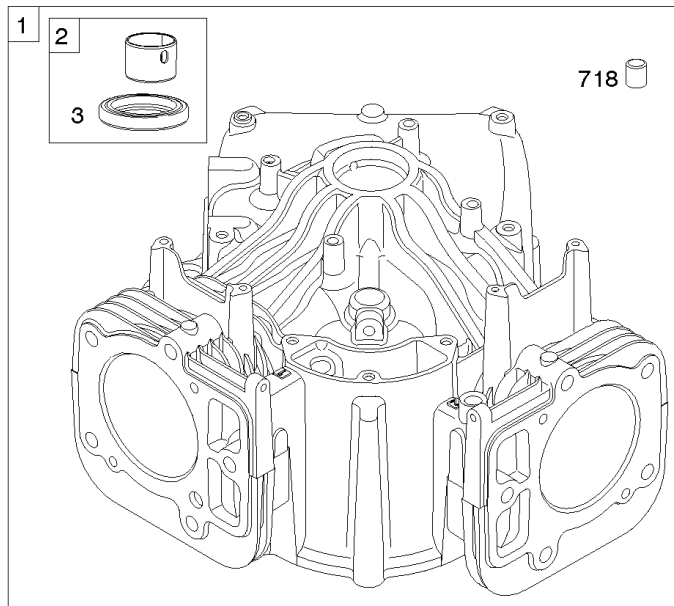
1058 OPERATOR'S MANUAL

1036 EMISSIONS LABEL



## Cylinder, Crankshaft, Camshaft, Air Guides

| REF NO | PART NO | QTY | DESCRIPTION  |
|--------|---------|-----|--|
| 1      | 591696  |     | CYLINDER ASSEMBLY  |
| 2      | 797673  |     | KIT, Bushing/Seal<br>-(Magneto Side)                                       |
| 3      | 391086S |     | SEAL, Oil<br>-(Magneto Side)   |
| 8      | 792185  |     | BREATHER ASSEMBLY  |
| 9      | 690937  |     | GASKET, Breather   |
| 10     | 691108  |     | SCREW<br>-(Breather Assembly)  |
| 11     | 792184  |     | TUBE-BREATHER  |
| 16     | 796855  |     | CRANKSHAFT   |
| 24     | 796335  |     | KEY, Flywheel  |
| 25     | 796909  |     | PISTON ASSEMBLY<br>-(Standard)   |
| 25     | 796910  |     | PISTON ASSEMBLY<br>-(.020 Oversize)  |
| 26     | 796911  |     | SET, Ring<br>-(Standard)   |
| 26     | 796912  |     | SET, Ring<br>-(.020 Oversize)  |
| 27     | 690975  |     | LOCK, Piston Pin   |
| 28     | 696581  |     | PIN, Piston<br>-(Standard)   |
| 29     | 796209  |     | ROD, Connecting  |
| 32     | 690976  |     | SCREW<br>-(Connecting Rod)   |
| 45     | 690977  |     | TAPPET, Valve  |
| 46     | 797242  |     | CAMSHAFT   |
| 212    | 695238  |     | LINK, Throttle   |
| 227    | 798856  |     | LEVER, Governor Control  |
| 250    | 690957  |     | RETAINER, Breather   |
| 252    | 794389  |     | COLLECTOR-OIL  |
| 306    | 796852  |     | SHIELD-CYLINDER<br>-(Cylinder #1)  |
| 306A   | 591666  |     | SHIELD-CYLINDER<br>-(Cylinder #2)  |
| 307    | 691003  |     | SCREW<br>-(Cylinder Shield)  |
| 307A   | 691108  |     | SCREW<br>-(Cylinder Shield)  |
| 377    | 690979  |     | KEY, Woodruff  |
| 405    | 697820  |     | SCREW<br>-(Back Plate)   |
| 447    | 691003  |     | SCREW<br>-(Air Guide Cover)  |
| 505    | 691029  |     | NUT<br>-(Governor Control Lever)   |
| 562    | 690311  |     | BOLT<br>-(Governor Control Lever)  |
| 573    | 790444  |     | PLATE, Back  |
| 718    | 690959  |     | PIN, Locating  |
| 741    | 690980  |     | GEAR, Timing   |
| 850    | 100106  |     | SEALANT, Liquid  |
| 865    | 591667  |     | COVER, Air Guide<br>-(Valley)  |
| 1036   | ----    |     | Label-Emissions<br>-(Available From A Briggs & Stratton Authorized Dealer) |



1319 WARNING LABEL

**WARNING**  
 Read and follow Operating Instructions before starting engine.  
 Operate in a well-ventilated area. Do not breathe engine exhaust.  
 Do not drink alcohol before or while operating the engine.  
 Do not operate the engine with a loose or damaged air filter.  
 Do not operate the engine with a loose or damaged spark plug.  
 Do not operate the engine with a loose or damaged belt.  
 Do not operate the engine with a loose or damaged fan.  
 Do not operate the engine with a loose or damaged pulley.  
 Do not operate the engine with a loose or damaged belt guard.  
 Do not operate the engine with a loose or damaged fan guard.  
 Do not operate the engine with a loose or damaged fan blade.  
 Do not operate the engine with a loose or damaged fan nut.  
 Do not operate the engine with a loose or damaged fan bolt.  
 Do not operate the engine with a loose or damaged fan washer.  
 Do not operate the engine with a loose or damaged fan lockwasher.  
 Do not operate the engine with a loose or damaged fan locknut.  
 Do not operate the engine with a loose or damaged fan lockwasher.  
 Do not operate the engine with a loose or damaged fan locknut.

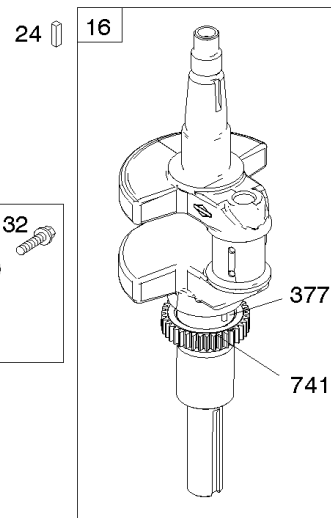
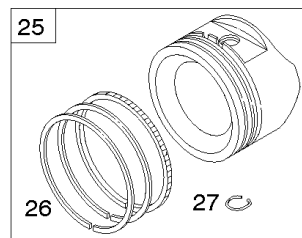
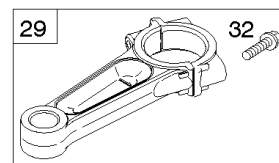
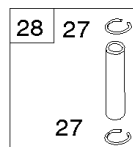
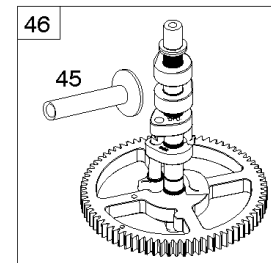
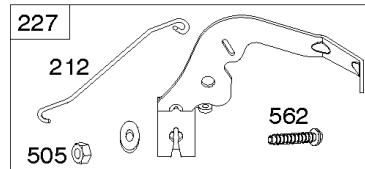
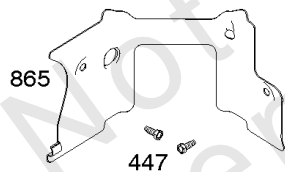
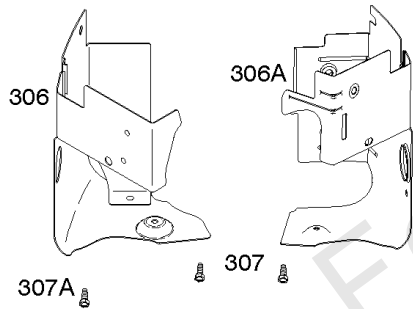
**REQUIRED** when replacing parts with warning labels affixed.

1319A WARNING LABEL

**REQUIRED** when replacing parts with warning labels affixed.

1058 OPERATOR'S MANUAL

1036 EMISSIONS LABEL



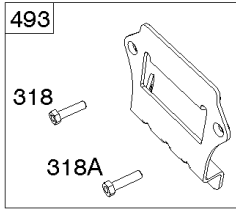
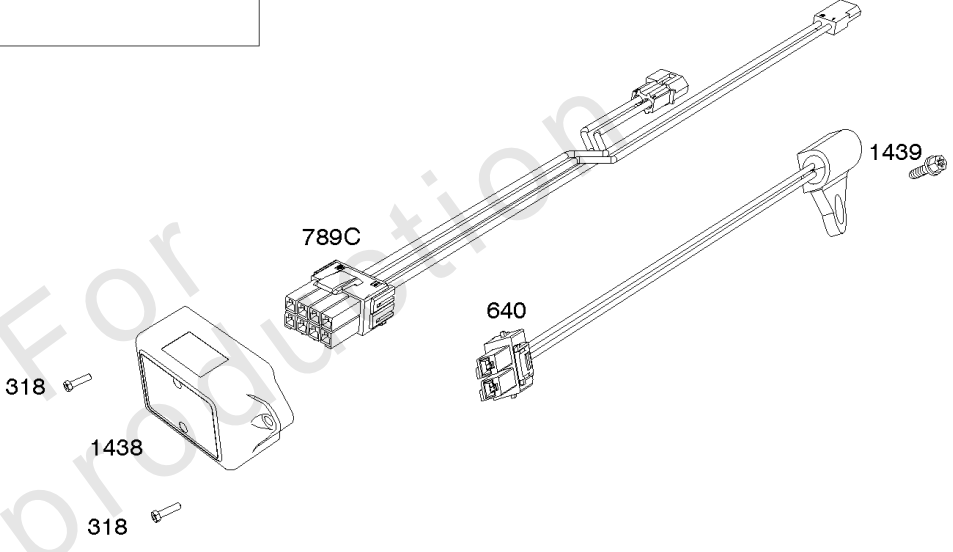
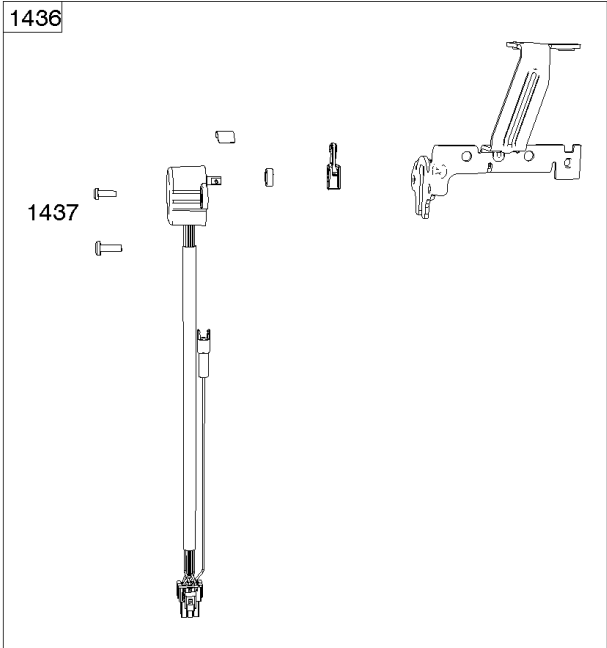
## ***Cylinder, Crankshaft, Camshaft, Air Guides***

---

| <b>REF NO</b> | <b>PART NO</b> | <b>QTY</b> | <b>DESCRIPTION</b> |
|---------------|----------------|------------|--------------------|
| 1058          | 279348TRI      |            | MANUAL, Operator's |
| 1319          | 794467         |            | LABEL, Warning     |
| 1319A         | 797669         |            | LABEL, Warning     |

---

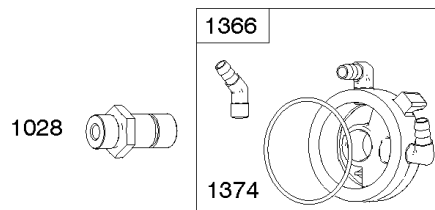
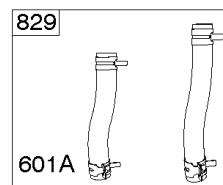
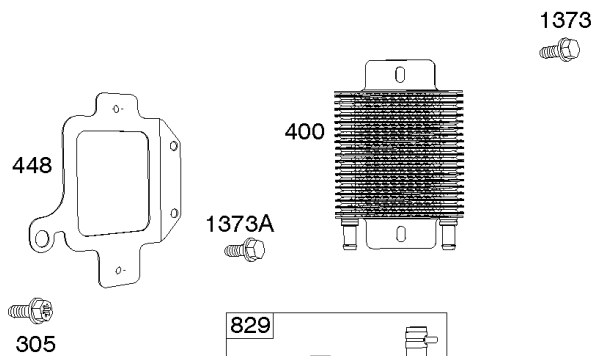
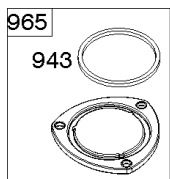
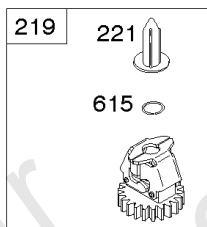
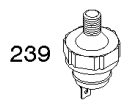
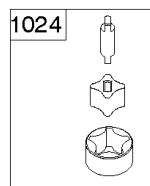
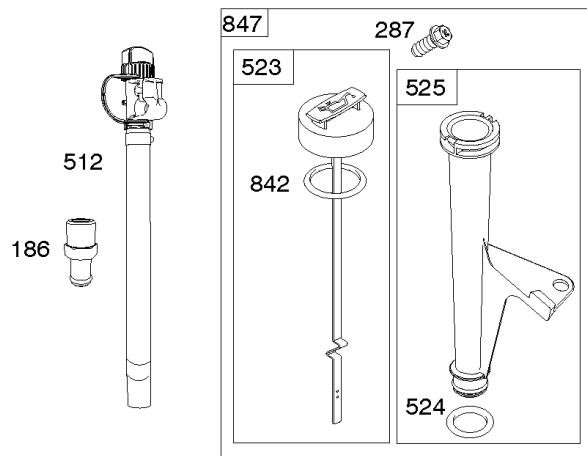
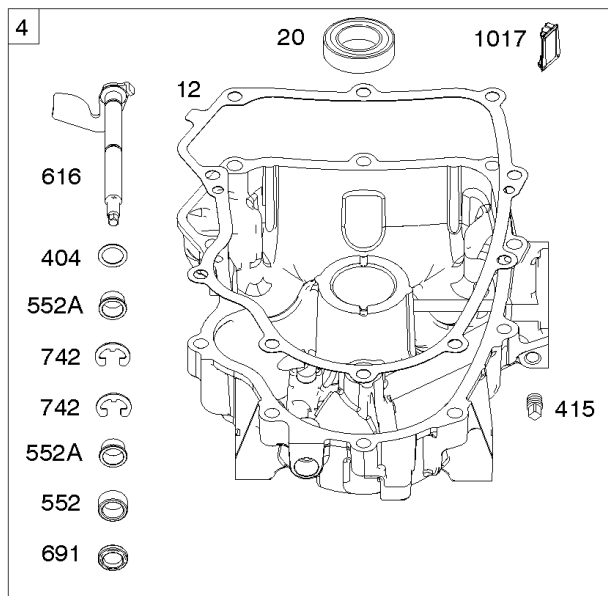
Not For Reproduction



## ECU Module

| REF NO | PART NO | QTY | DESCRIPTION  |
|--------|---------|-----|--|
| 318    | 691127  |     | SCREW<br>-(Mounting Bracket)   |
| 318A   | 792629  |     | SCREW<br>-(Mounting Bracket) (Electronic Choke Module To Mounting Bracket) |
| 493    | 797176  |     | BRACKET, Mounting<br>-(Electronic Choke)                                   |
| 640    | 796913  |     | WIRE ASSEMBLY<br>-(Thermistor)   |
| 1436   | 799108  |     | MOTOR, Stepper/Bracket   |
| 1437   | 699891  |     | SCREW<br>-(Stepper/Bracket Motor)  |
| 1438   | 796352S |     | MODULE, Electronic Choke   |
| 1439   | 794904  |     | SCREW<br>-(Thermistor Wire Assembly)                                       |

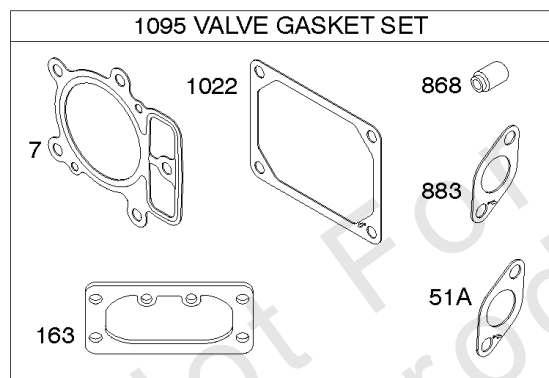
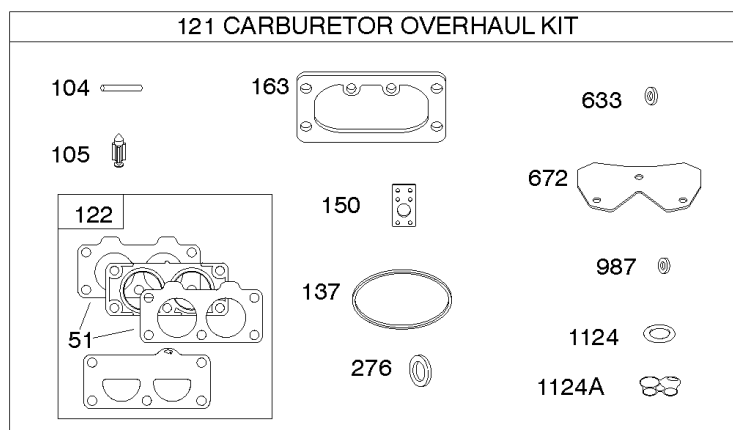
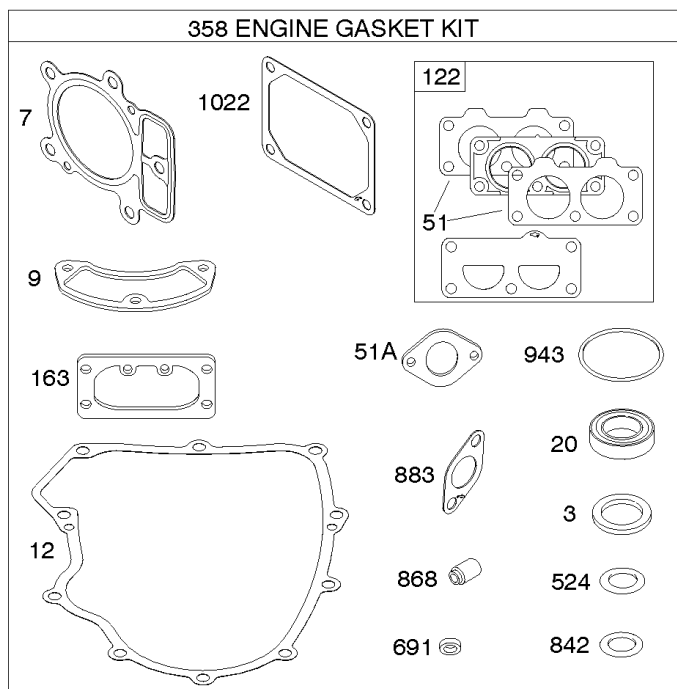
Not For Reproduction





## Engine Sump, Lubrication, Oil Cooler

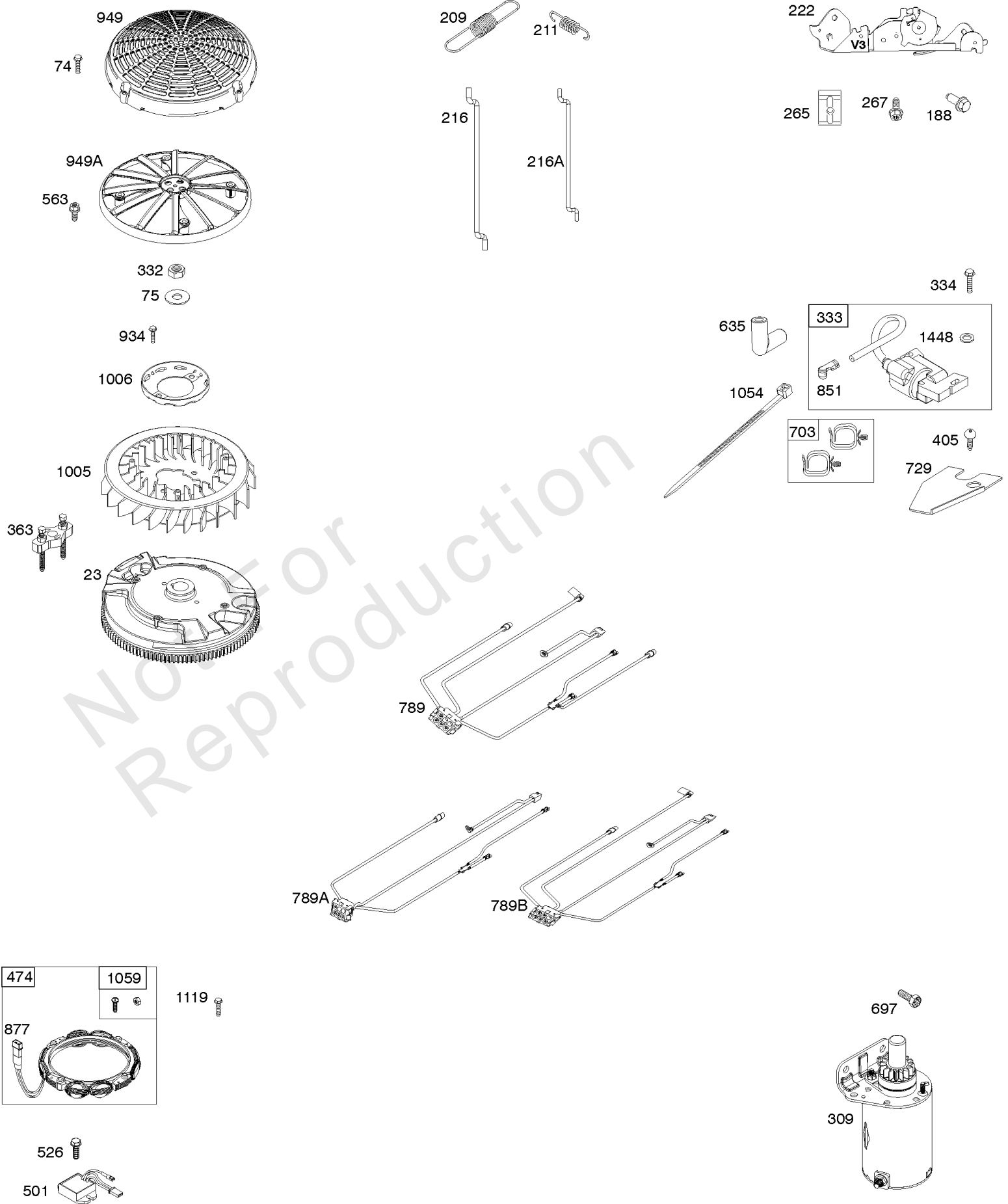
| REF NO | PART NO | QTY | DESCRIPTION                            |
|--------|---------|-----|--|
| 4      | 797502  |     | SUMP, Engine                           |
| 12     | 591911  |     | GASKET, Crankcase                      |
| 15     | 690946  |     | PLUG, Oil Drain                        |
| 20     | 795387  |     | SEAL, Oil<br>-(PTO Side)               |
| 22     | 694966  |     | SCREW<br>-(Crankcase Cover/Sump)       |
| 186    | 796532  |     | CONNECTOR, Hose<br>-(Oil Drain)        |
| 219    | 793338  |     | GEAR, Governor                         |
| 220    | 799772  |     | WASHER<br>-(Governor Gear)             |
| 221    | 841026  |     | CUP, Governor                          |
| 287    | 697820  |     | SCREW<br>-(Dipstick Tube)              |
| 305    | 691005  |     | SCREW<br>-(Blower Housing)             |
| 400    | 796862  |     | COOLER, Oil                            |
| 404    | 690442  |     | WASHER<br>-(Governor Crank)            |
| 415    | 794903  |     | PLUG<br>-(Sump)                        |
| 448    | 799103  |     | BRACKET, Oil Cooler                    |
| 512    | 796530  |     | HOSE, Oil Drain                        |
| 523    | 691036  |     | DIPSTICK                               |
| 524    | 691032  |     | SEAL, O-Ring                           |
| 525    | 691037  |     | TUBE, Dipstick                         |
| 552    | 796638  |     | BUSHING, Governor Crank                |
| 552A   | 690553  |     | BUSHING, Governor Crank                |
| 601A   | 841597  |     | CLAMP, Hose                            |
| 615    | 698290  |     | RETAINER, Governor Shaft               |
| 616    | 691045  |     | CRANK, Governor                        |
| 691    | 790574  |     | SEAL, Governor Shaft                   |
| 742    | 690328  |     | RETAINER, E Ring                       |
| 750    | 796208  |     | SCREW<br>-(Oil Pump Cover)             |
| 829    | 799104  |     | HOSE, Oil Cooler<br>-(Oil Cooler Hose) |
| 842    | 691031  |     | SEAL, O-Ring<br>-(Dipstick Tube)       |
| 847    | 499602  |     | DIPSTICK/TUBE ASSEMBLY                 |
| 943    | 796222  |     | SEAL, O-Ring<br>-(Oil Pump Cover)      |
| 965    | 796221  |     | COVER, Oil Pump                        |
| 1017   | 796214  |     | SCREEN, Oil Pump                       |
| 1024   | 794644  |     | PUMP-OIL                               |
| 1027   | 798576  |     | FILTER, Oil<br>-(Orange)               |
| 1028   | 796864  |     | ADAPTER, Oil Filter                    |
| 1366   | 799131  |     | DIVERTER, Oil Cooler                   |
| 1373   | 695629  |     | SCREW<br>-(Oil Cooler Bracket)         |
| 1373A  | 799105  |     | SCREW<br>-(Oil Cooler Bracket)         |
| 1374   | 796863  |     | SEAL, O-Ring<br>-(Oil Cooler Diverter) |



Not For Reproduction

## Engine/Valve Gasket Set, Carburetor Overhaul Kit

| REF NO | PART NO | QTY | DESCRIPTION                           |
|--------|---------|-----|---------------------------------------|
| 3      | 391086S |     | SEAL, Oil<br>-(Magneto Side)          |
| 7      | 796851  |     | GASKET, Cylinder Head                 |
| 9      | 690937  |     | GASKET, Breather                      |
| 12     | 591911  |     | GASKET, Crankcase                     |
| 20     | 795387  |     | SEAL, Oil<br>-(PTO Side)              |
| 51     | 796876  |     | GASKET, Intake                        |
| 51A    | 690949  |     | GASKET, Intake                        |
| 104    | 694918  |     | PIN, Float Hinge                      |
| 105    | 808798  |     | VALVE, Float Needle                   |
| 121    | 799132  |     | KIT, Carburetor Overhaul              |
| 122    | 798759  |     | SPACER, Carburetor                    |
| 137    | 690994  |     | GASKET, Float Bowl                    |
| 150    | 841649  |     | GASKET, Nozzle                        |
| 163    | 691001  |     | GASKET, Air Cleaner                   |
| 276    | 695410  |     | WASHER, Sealing                       |
| 358    | 799117  |     | GASKET SET, Engine                    |
| 524    | 691032  |     | SEAL, O-Ring                          |
| 633    | 690722  |     | SEAL, Choke/Throttle Shaft            |
| 672    | 690234  |     | GASKET, Carburetor Plate              |
| 691    | 790574  |     | SEAL, Governor Shaft                  |
| 842    | 691031  |     | SEAL, O-Ring<br>-(Dipstick Tube)      |
| 868    | 690968  |     | SEAL, Valve                           |
| 883    | 690970  |     | GASKET, Exhaust                       |
| 943    | 796222  |     | SEAL, O-Ring<br>-(Oil Pump Cover)     |
| 987    | 808183  |     | SEAL, Choke/Throttle Shaft            |
| 1022   | 690971  |     | GASKET, Rocker Cover                  |
| 1095   | 694013  |     | GASKET SET, Valve                     |
| 1124   | 690988  |     | SEAL, O-Ring<br>-(Fuel Transfer Tube) |
| 1124A  | 841653  |     | SEAL, O-Ring<br>-(Fuel Transfer Tube) |



## ***Flywheel, Controls, Wire Harness, Alternator, Starter***

| <b>REF NO</b> | <b>PART NO</b> | <b>QTY</b> | <b>DESCRIPTION</b>                    |
|---------------|----------------|------------|---------------------------------------|
| 23            | 799090         |            | FLYWHEEL                              |
| 74            | 698425         |            | SCREW<br>-(Rotating Screen)           |
| 75            | 691056         |            | WASHER<br>-(Flywheel)                 |
| 188           | 691108         |            | SCREW<br>-(Control Bracket)           |
| 209           | 799258         |            | SPRING, Governor<br>-(Yellow)         |
| 211           | 691019         |            | SPRING, Governed Idle<br>-(No Color)  |
| 216           | 691022         |            | LINK, Choke<br>-(Manual Choke)        |
| 222           | 798916         |            | BRACKET, Control                      |
| 265           | 691024         |            | CLAMP, Casing                         |
| 267           | 792629         |            | SCREW<br>-(Casing Clamp)              |
| 309           | 590476         |            | MOTOR, Starter                        |
| 332           | 691059         |            | NUT<br>-(Flywheel)                    |
| 333           | 799651         |            | ARMATURE, Magneto                     |
| 334           | 691061         |            | SCREW<br>-(Magneto Armature)          |
| 363           | 19203          |            | PULLER, Flywheel                      |
| 405           | 697820         |            | SCREW<br>-(Back Plate)                |
| 474           | 592830         |            | ALTERNATOR<br>-(10-16 Amp Regulated)  |
| 501           | 845907         |            | REGULATOR                             |
| 526           | 691108         |            | SCREW<br>-(Regulator)                 |
| 563           | 799360         |            | SCREW<br>-(Debris Screen Guard)       |
| 635           | 692076         |            | BOOT, Spark Plug                      |
| 697           | 591909         |            | SCREW<br>-(Starter Motor) (Drive Cap) |
| 703           | 691010         |            | CLIP                                  |
| 729           | 797454         |            | CLIP, Wire                            |
| 789A          | 591392         |            | HARNESS, Wiring                       |
| 851           | 493880S        |            | TERMINAL-SPARK PLUG                   |
| 877           | 399916         |            | WIRE/CONN-ALTERNATOR                  |
| 934           | 592604         |            | SCREW<br>-(Fan Retainer)              |
| 949           | 799357         |            | GUARD, Debris Screen                  |
| 949A          | 593206         |            | GUARD, Debris Screen                  |
| 1005          | 791236         |            | FAN, Flywheel                         |
| 1006          | 798750         |            | RETAINER, Fan                         |
| 1054          | 280275         |            | TIE, Cable                            |
| 1059          | 698516         |            | KIT, Screw/Washer                     |
| 1119          | 691183         |            | SCREW<br>-(Alternator)                |
| 1448          | 690260         |            | WASHER<br>-(Magneto Armature)         |

## Replacement Engine - US & Canada

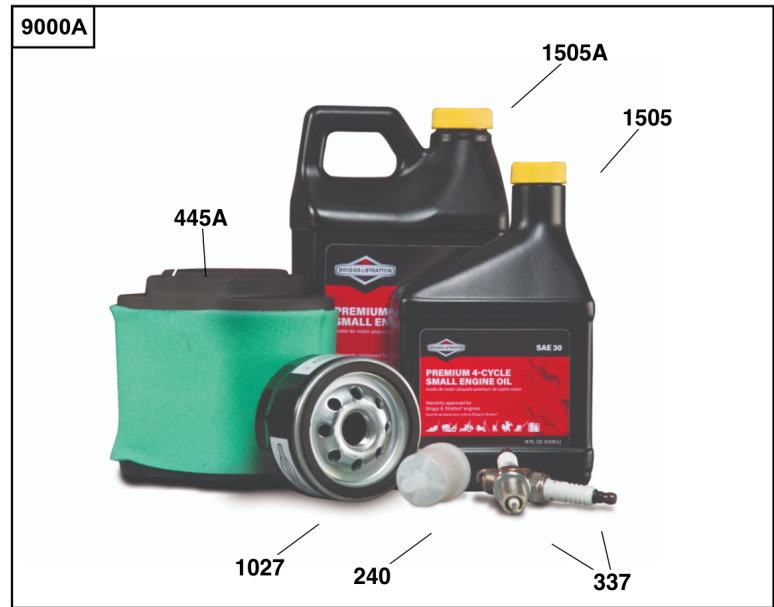
| REF NO | PART NO      | QTY | DESCRIPTION  |
|--------|--------------|-----|--|
|        | 49T8770004G1 | 1   | Replacement Engine   |
|        | 797510       | 1   | Replacement Short Block  |
| -----  |              |     | Top No-Load Speed: 3600<br>-Trim: ALL  |
| -----  |              |     | Service Note: Transfer Muffler and/or Spark Arrester Assembly from the original engine if suitable for additional service or add new parts as required |
| -----  |              |     | Service Note: Transfer Oil Drain Flex Hose   |

Not For Reproduction



# Model 40, 44 & 49 Engine Accessories Catalog

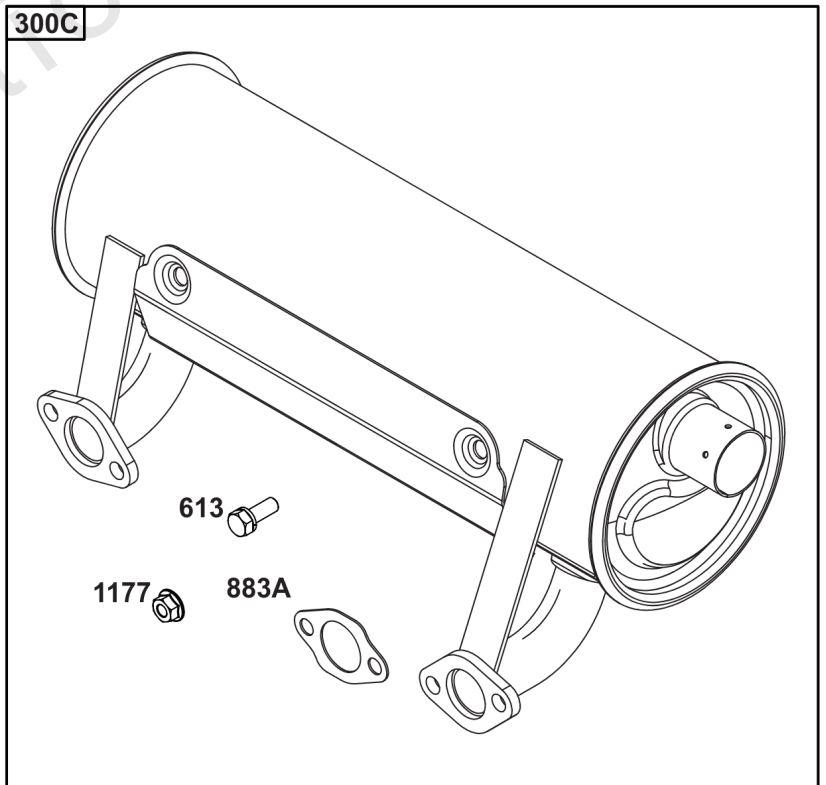
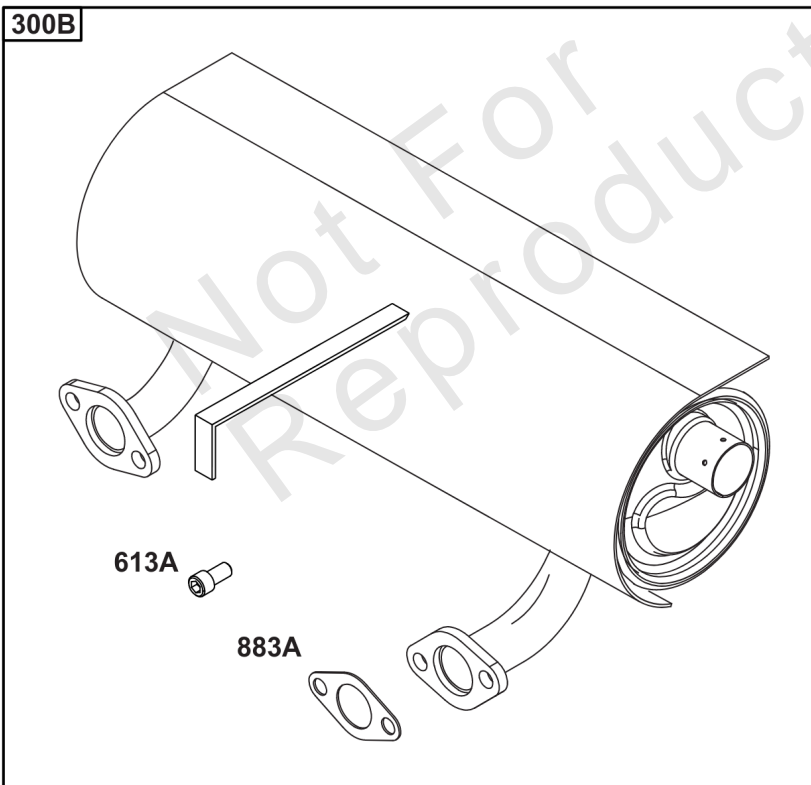
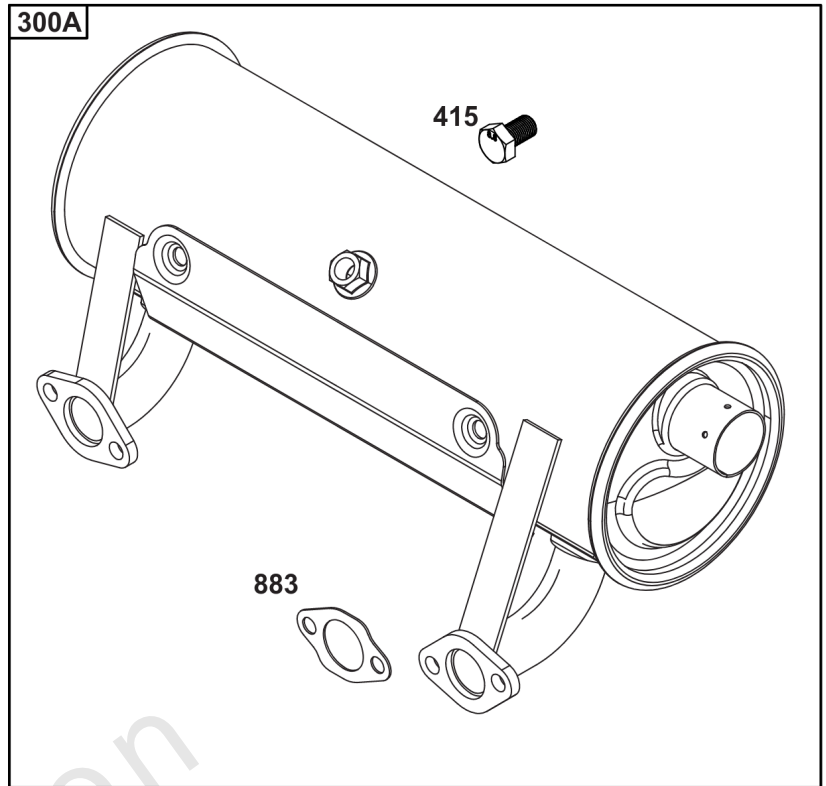
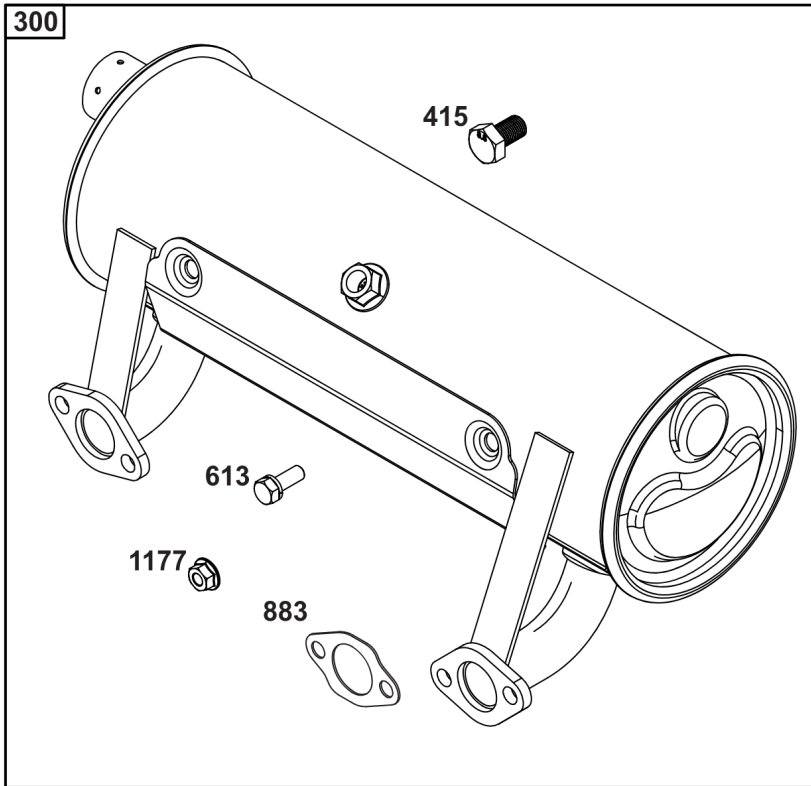
Not For  
Reproduction





## Maintenance Kits

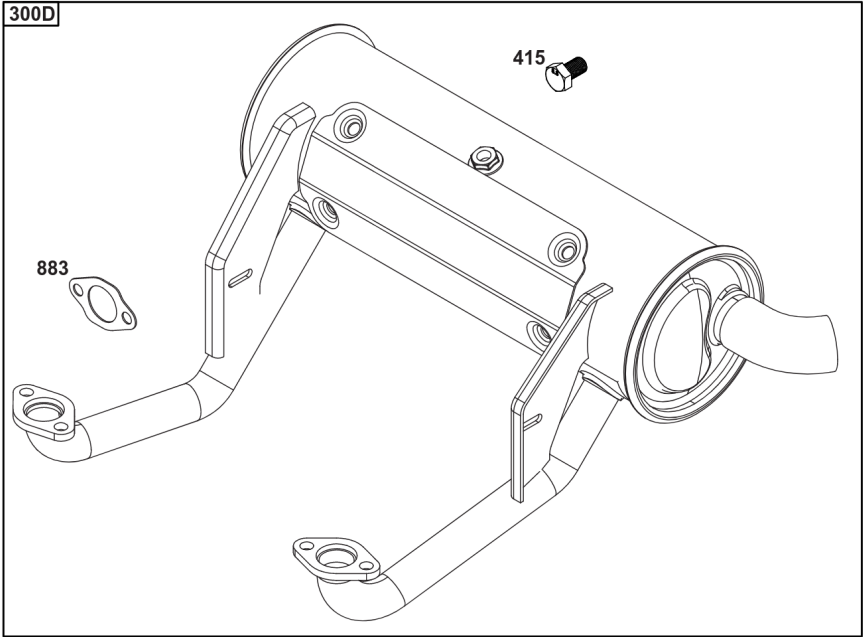
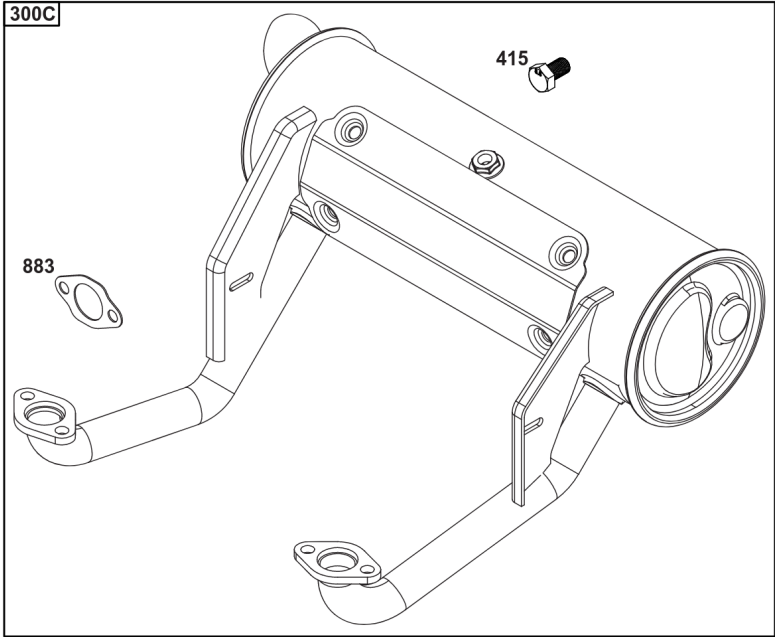
| REF NO | PART NO  | QTY | DESCRIPTION   |
|--------|----------|-----|---|
| 9000   | 84002442 |     | KIT, Maintenance<br>-(Intek / EXi V-Twin Engines) (Do not use with Home Standby Generators.)          |
| 9000A  | 84002317 |     | KIT, Maintenance<br>-(Professional Series™ V-Twin Engines) (Do not use with Home Standby Generators.) |
| 9000B  | 84002316 |     | KIT, Maintenance<br>-(Commercial Series V-Twin Engines) (Do not use with Home Standby Generators.)    |
| 9000C  | 84002318 |     | KIT, Maintenance<br>-(Oil Guard™ Engines) (Do not use with Home Standby Generators.)                  |
| 9000D  | 84002315 |     | KIT, Maintenance<br>-(Non-Oil Guard™ Engines) (Do not use with Home Standby Generators.)              |
| 240    | 84001895 | 1   | FILTER, Fuel<br>-(40 Micron)  |
| 240A   | 845125   | 1   | FILTER, Fuel<br>-(20 Micron)  |
| 337    | 491055S  | 2   | PLUG, Spark   |
| 445    | 594201   | 1   | FILTER, A/C Cartridge   |
| 445A   | 792105   | 1   | FILTER, A/C Cartridge   |
| 445B   | 798897   | 1   | FILTER, A/C Cartridge   |
| 445C   | 841497   | 1   | FILTER, A/C Cartridge   |
| 967    | 797704   | 1   | FILTER, Pre Cleaner   |
| 1027   | 492932S  | 1   | FILTER, Oil<br>-(Standard)  |
| 1027A  | 696854   | 1   | FILTER, Oil<br>-(Premium)   |
| 1027B  | 842921   | 1   | FILTER, Oil<br>-(Vanguard®)   |
| 1027C  | 84007094 | 1   | FILTER, OIL<br>-(Oil Guard™)  |
| 1505   | 100005   |     | OIL-4 CYCLE 30W 18OZ.<br>-(18 oz. Bottle)   |
| 1505A  | 100028   |     | OIL-4 CYCLE30W 48OZ<br>-(48 oz. Bottle)   |
| 1505B  | 100170   |     | OIL-5QT VANGUARD (CASE)<br>-(5 qt. Bottle)  |
| 1505C  | 100169   |     | OIL-1QT VANGUARD (CASE)<br>-(1 qt. Bottle)  |



## Engine Mounted Below Deck Mufflers

| REF NO | PART NO | QTY | DESCRIPTION  |
|--------|---------|-----|--|
| 300    | 594584  | 1   | KIT-MUFFLER/GUARD<br>-(Oil Filter Side Outlet) (Engine Supported) (O2 Sensor Port) |
| 300A   | 593877  | 1   | MUFFLER<br>-(Starter Side Outlet) (Engine Supported) (O2 Sensor Port)              |
| 300B   | 594583  | 1   | MUFFLER<br>-(Starter Side Outlet) (Engine Supported) (No O2 Sensor Port)           |
| 300C   | 692120  | 1   | MUFFLER<br>-(Starter Side Outlet) (No O2 Sensor Port)                              |
| 415    | 596859  | 1   | PLUG<br>-(O2 Sensor Port)  |
| 613    | 690341  | 4   | SCREW<br>-(Muffler)  |
| 613A   | 690363  | 4   | SCREW<br>-(Muffler)  |
| 883    | 594365  | 2   | GASKET, Exhaust  |
| 883A   | 690970  | 2   | GASKET, Exhaust  |
| 1177   | 690941  | 4   | NUT<br>-(Muffler)  |

Not For Reproduction



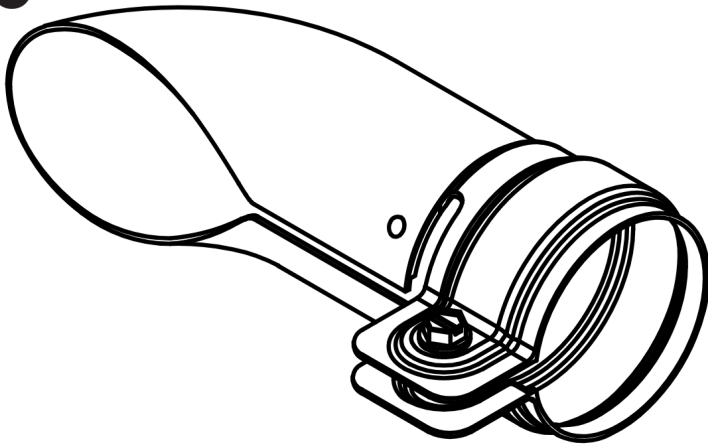
Not For  
Reproduction

## ***Engine Mounted Above Deck Mufflers***

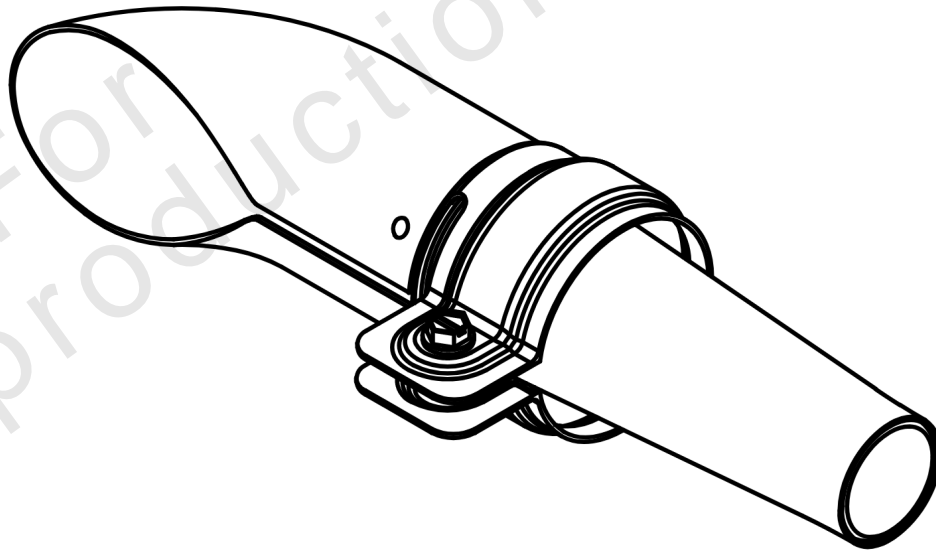
| <b>REF NO</b> | <b>PART NO</b> | <b>QTY</b> | <b>DESCRIPTION</b>  |
|---------------|----------------|------------|---|
| 300C          | 595138         | 1          | MUFFLER<br>-(Oil Filter Side Outlet) (Self-Supporting) (O2 Sensor Port) |
| 300D          | 595139         | 1          | MUFFLER<br>-(Starter Side Outlet) (Self-Supporting) (O2 Sensor Port)    |
| 415           | 596859         | 1          | PLUG<br>-(O2 Sensor Port)   |
| 883           | 594365         | 2          | GASKET, Exhaust   |

Not For Reproduction

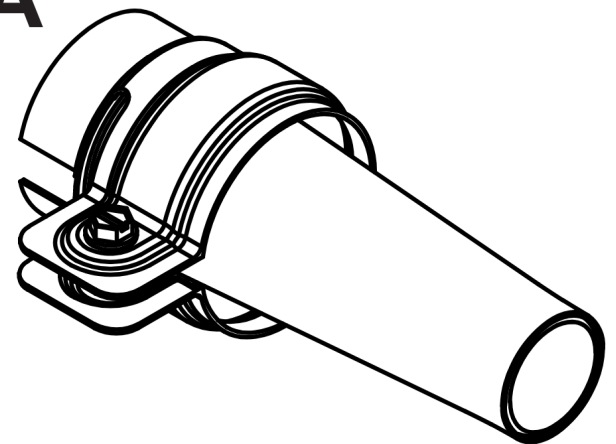
**676**



**994**



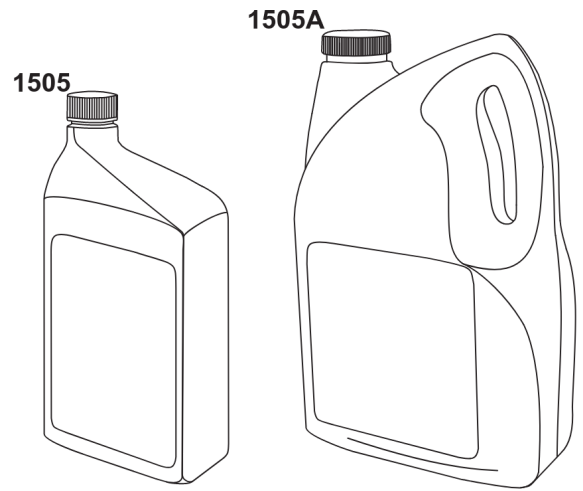
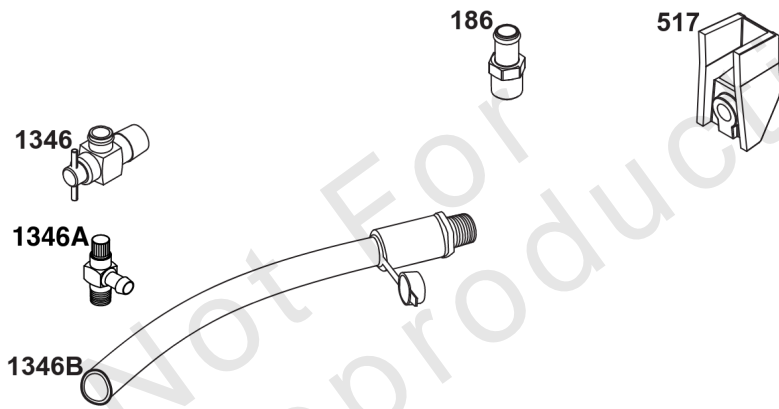
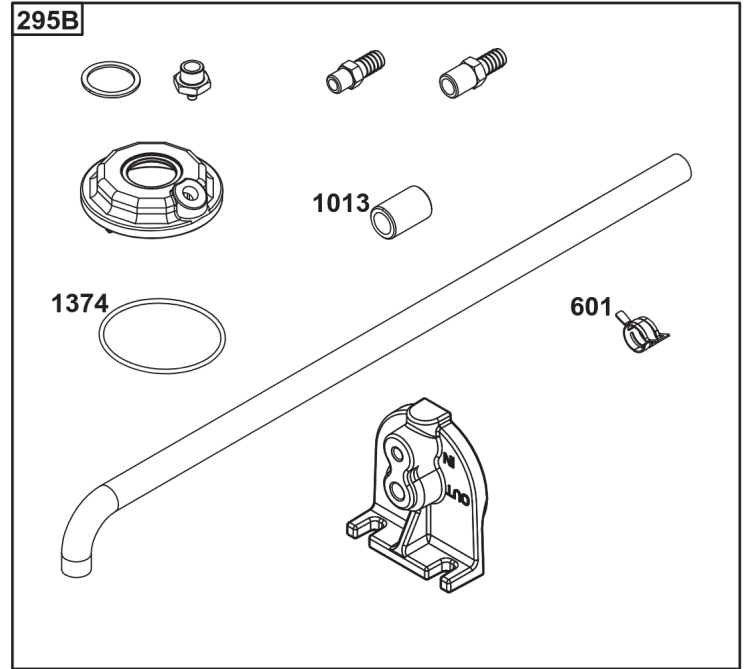
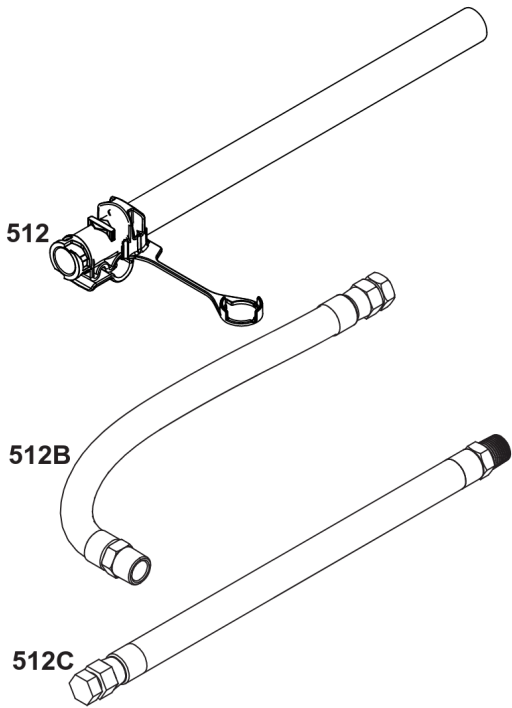
**994A**



## Spark Arrester/Deflector

| REF NO | PART NO | QTY | DESCRIPTION   |
|--------|---------|-----|---|
| 676    | 593869  | 1   | DEFLECTOR, Muffler<br>-(For Below Deck Mufflers Only) |
| 994    | 593885  | 1   | ARRESTOR, Spark<br>-(For Below Deck Mufflers Only)    |
| 994A   | 593868  | 1   | ARRESTOR, Spark<br>-(For Below Deck Mufflers Only)    |

Not For Reproduction

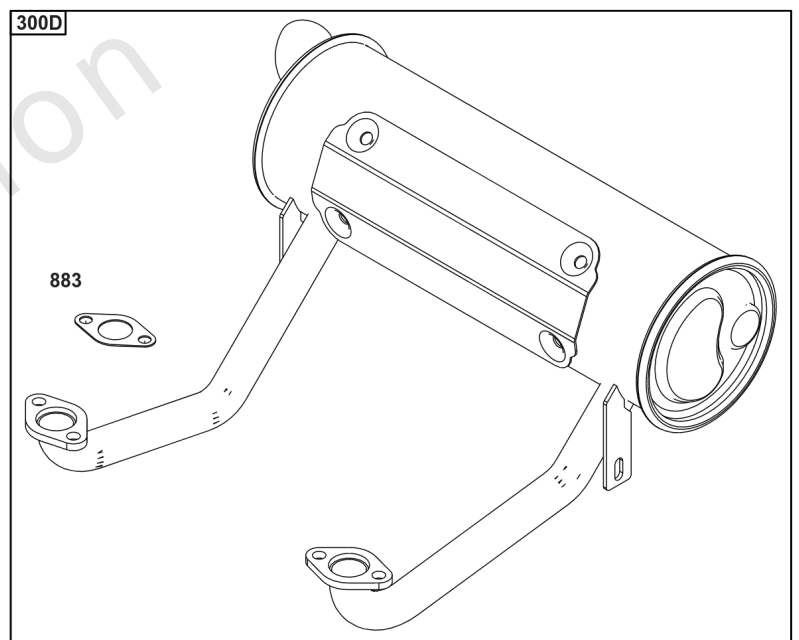
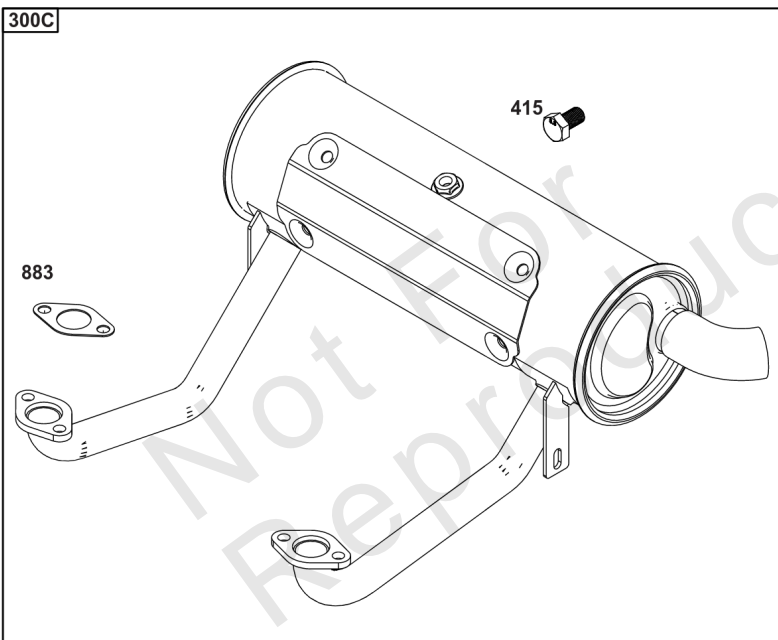
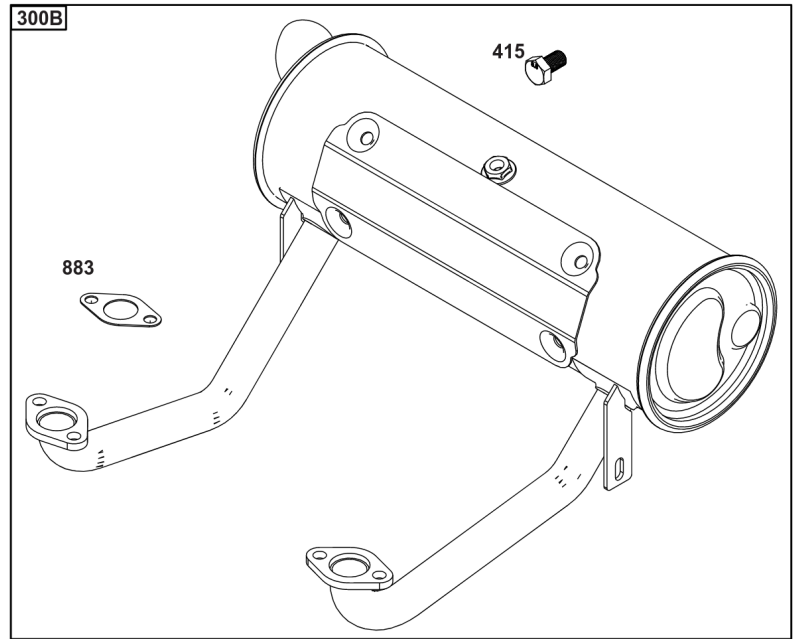
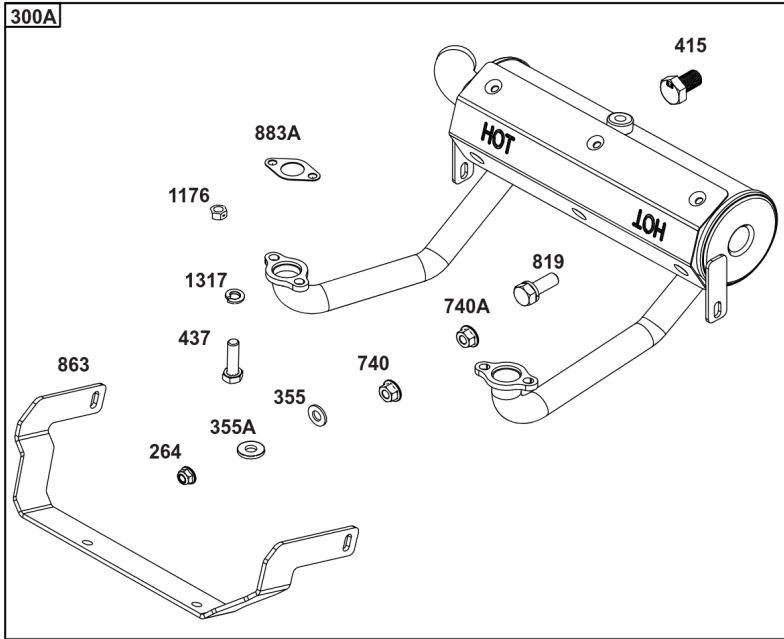




## Lubrication

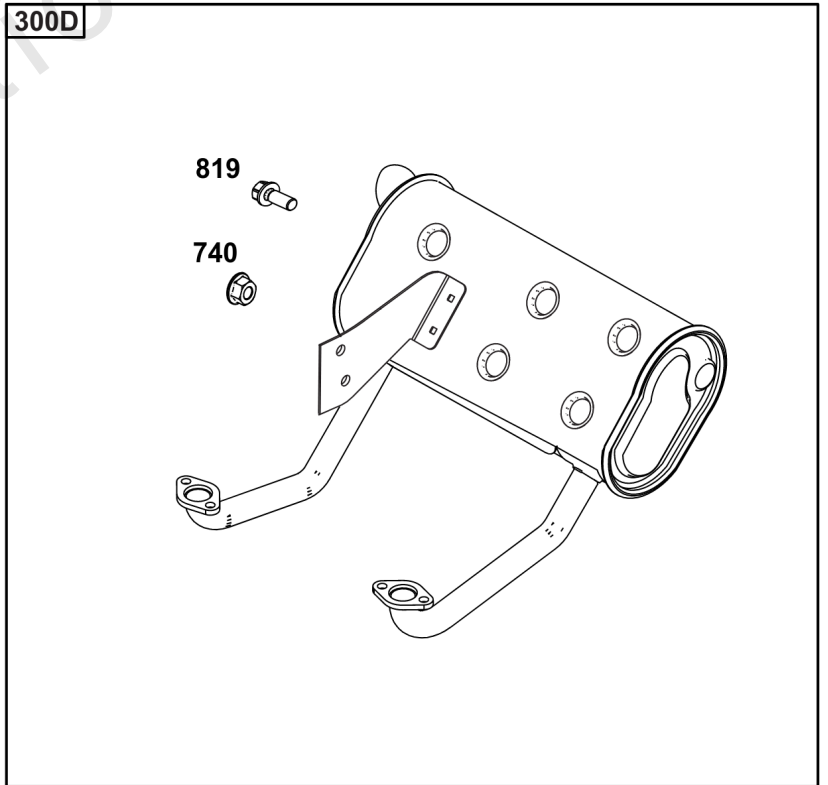
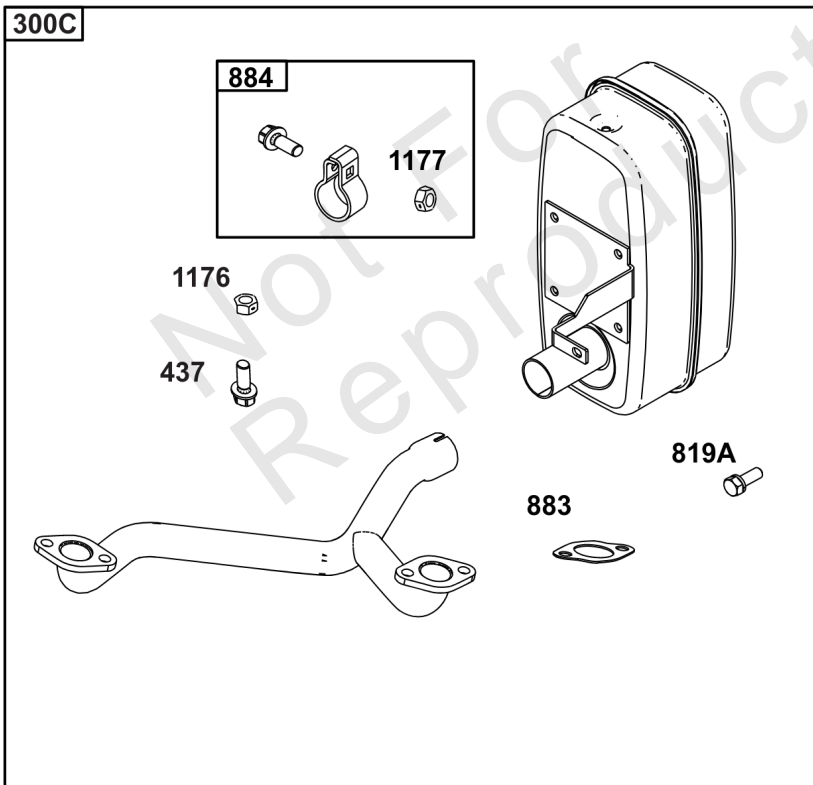
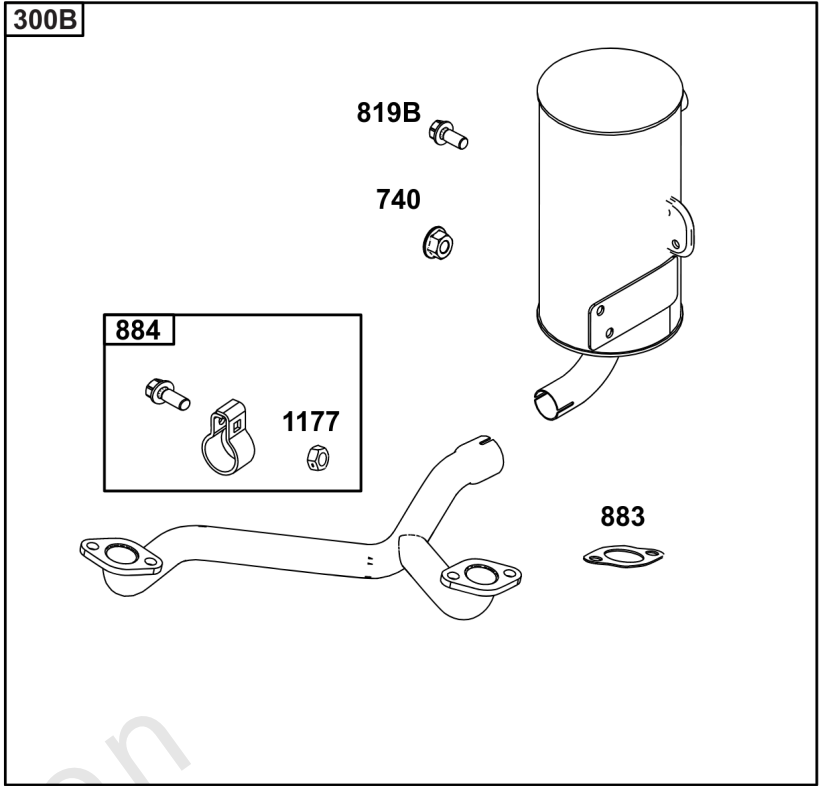
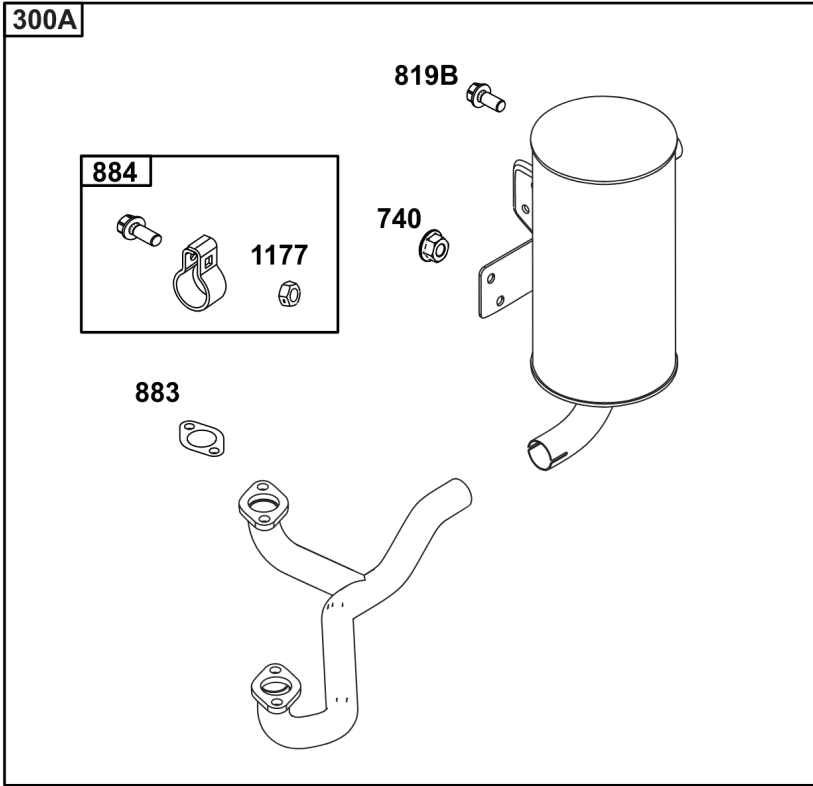
| REF NO | PART NO   | QTY | DESCRIPTION   |
|--------|-----------|-----|---|
| 186    | 796532    | 1   | CONNECTOR, Hose<br>-(Threaded Engine Block Connector for EZ-Oil Drain Hose) (Order hose separate) |
| 239    | 690233    | 1   | SWITCH, Oil Pressure<br>-(2-4 PSI Normally-Closed Switch)   |
| 239A   | 491657S   | 1   | SWITCH, Oil Pressure<br>-(3-5 PSI Normally-Closed Switch)   |
| 239B   | 841281    | 1   | SWITCH, Oil Pressure<br>-(7-10 PSI Normally-Closed Switch)  |
| 239C   | 694115    | 1   | SWITCH, Oil Pressure<br>-(9-13 PSI Normally-Closed Switch)  |
| 239D   | 697049    | 1   | SWITCH, Oil Pressure<br>-(3-6 PSI Normally-Open Switch)   |
| 295B   | 594271    | 1   | ADAPTER, Remote Oil Filter<br>-(Remote Oil Filter Kit)  |
| 512    | 594200    | 1   | HOSE, Oil Drain<br>-(EZ-Oil Drain Hose, 10.5") (Order threaded engine block connector separate)   |
| 512    | 593635    | 1   | HOSE, Oil Drain<br>-(EZ-Oil Drain Hose, 13.75") (Order threaded engine block connector separate)  |
| 512B   | 1723165SM | 1   | HOSE, Oil Drain, 10-1/2" Long, 3/8-18 Fittings<br>-(10.5")  |
| 512C   | 5048681SM | 1   | HOSE, OIL DRAIN<br>-(12.5")   |
| 517    | 593633    | 1   | RETAINER, Oil Drain   |
| 601    | 841597    | 4   | CLAMP, Hose   |
| 1013   | 690954    | 1   | NIPPLE, Oil Filter  |
| 1346   | 844802    | 1   | VALVE, Oil Drain Shut Off   |
| 1346A  | 492031    | 1   | VALVE, Oil Drain Shut Off   |
| 1346B  | 5401WEB   | 1   | VALVE, Oil Drain Shut Off<br>-(1/4 Turn Oil Drain Valve with Hose)                                |
| 1374   | 796863    | 1   | SEAL, O-Ring  |
| 1505   | 100169    |     | OIL-1QT VANGUARD (CASE)<br>-(1 qt. Bottle)  |
| 1505A  | 100170    |     | OIL-5QT VANGUARD (CASE)<br>-(5 qt. Bottle)  |

# Implement Mounted Above Deck Mufflers



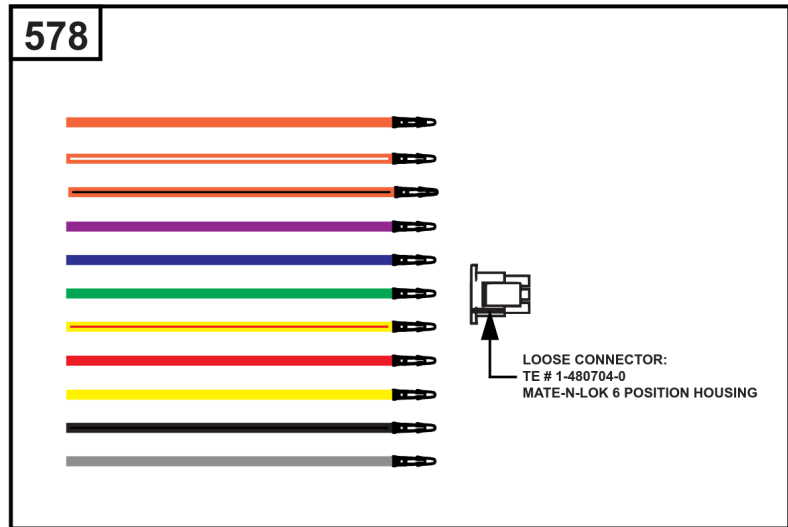
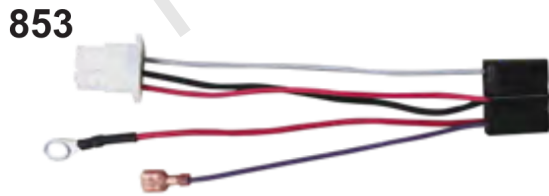
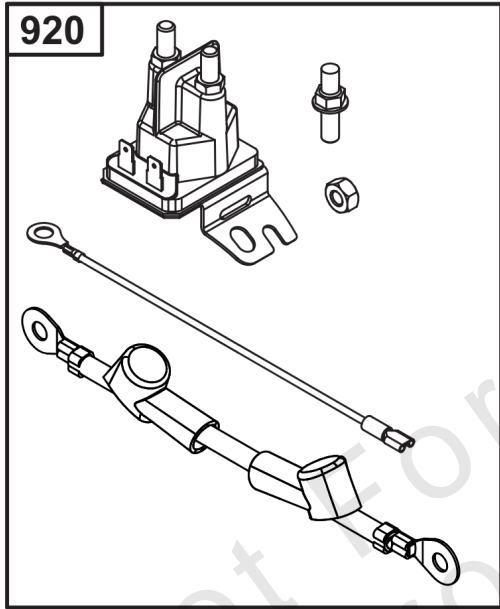
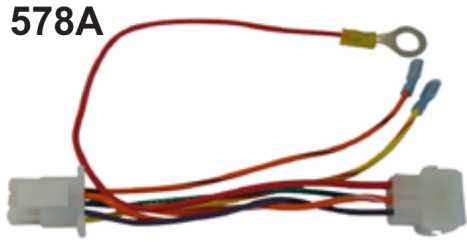
## Implement Mounted Above Deck Mufflers

| REF NO | PART NO   | QTY | DESCRIPTION   |
|--------|-----------|-----|---|
| 300A   | 594585    | 1   | MUFFLER<br>-(Oil Filter Side Outlet) (Implement Supported) (O2 Sensor Port) |
| 300B   | 595134    | 1   | MUFFLER<br>-(Oil Filter Side Outlet) (O2 Sensor Port)                       |
| 300C   | 595135    | 1   | MUFFLER<br>-(Starter Side Outlet) (O2 Sensor Port)                          |
| 300D   | 595136    | 1   | MUFFLER<br>-(Oil Filter Side Outlet)  |
| 264    | 703465    | 4   | NUT, 5/16-18, GR5<br>-(Muffler Adapter)                                     |
| 355    | 5025292SM | 4   | WASHER, 5/16" GD.9 FL<br>-(Muffler Bracket)                                 |
| 355A   | 5025155SM | 2   | WASHER, 5/16<br>-(Muffler Bracket)  |
| 415    | 596859    | 1   | PLUG<br>-(O2 Sensor Port)   |
| 437    | 703585    | 4   | CAPSCREW, 5/16-18X1<br>-(Exhaust Manifold)                                  |
| 740    | 703164    | 2   | NUT<br>-(Muffler Bracket)   |
| 740A   | 703115    | 2   | NUT<br>-(Muffler Bracket)   |
| 819    | 690341    | 4   | SCREW<br>-(Muffler Bracket)   |
| 863    | 597480    | 1   | BRACKET, Muffler  |
| 883    | 594365    | 2   | GASKET, Exhaust   |
| 883A   | 690970    | 2   | GASKET, Exhaust   |
| 1176   | 690941    | 4   | NUT<br>-(Exhaust Manifold)  |
| 1317   | 703116    | 4   | LCKWSHR<br>-(Exhaust Manifold)  |



## Exhaust/Muffler Configurations

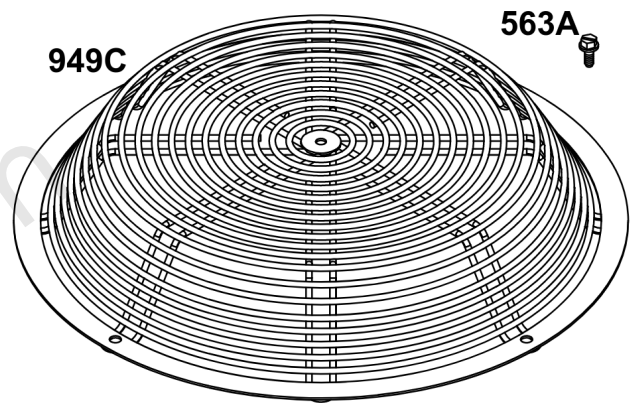
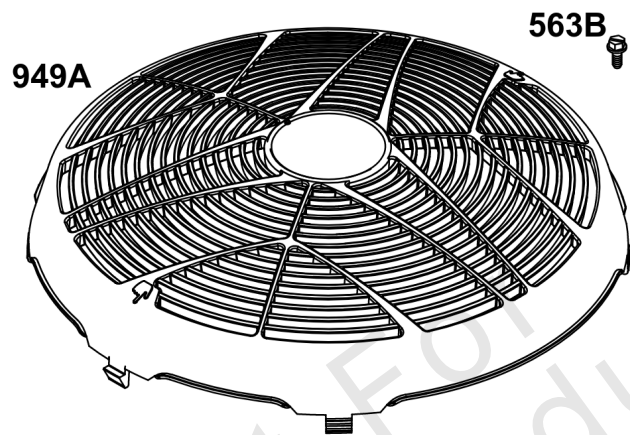
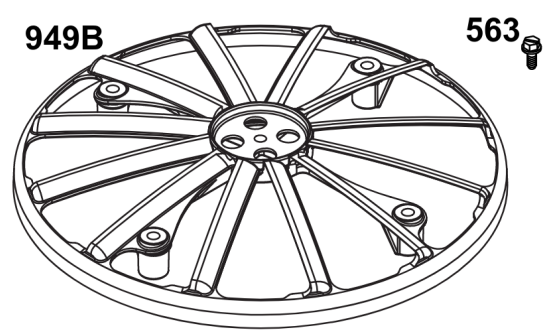
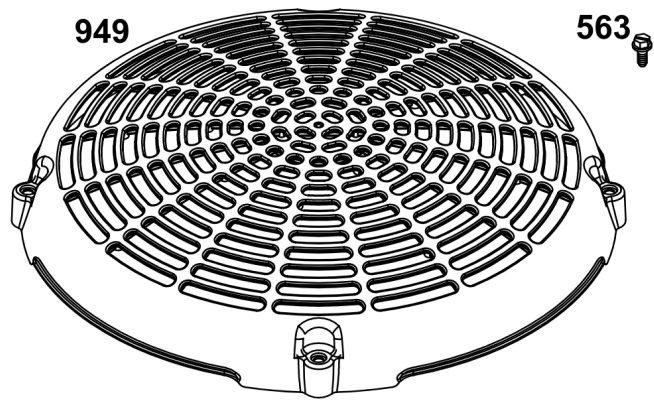
| REF NO | PART NO  | QTY | DESCRIPTION   |
|--------|----------|-----|---|
| 300A   | 771127   | 1   | MUFFLER<br>-(Oil Filter Side Outlet)(Commercial & Professional Series)  |
| 300B   | 771128   | 1   | MUFFLER<br>-(Starter Side Outlet)(Commercial & Professional Series)   |
| 300C   | 595822   | 1   | MUFFLER<br>-(Starter Side Outlet)(Commercial & Professional Series)   |
| 300D   | 84003680 | 1   | MUFFLER<br>-(Oil Filter Side Outlet) (Commercial & Professional Series)(Vanguard 810 & 810<br>EFI) (Compatible with 593868 Spark Arrester, 593885 Spark Arrester with<br>Deflector.) (Equipped with plug for blocking off O2 sensor port for non EFI<br>engines.) |
| 437    | 690341   | 4   | SCREW<br>-(Exhaust Manifold)  |
| 740    | 704067   | 2   | NUT, HEX FLNG,5/16-18<br>-(Muffler Bracket)   |
| 819    | 592604   | 2   | SCREW<br>-(Muffler Bracket)   |
| 819A   | 695629   | 4   | SCREW<br>-(Muffler Bracket)   |
| 819B   | 692062   | 2   | SCREW<br>-(Muffler Bracket)   |
| 883    | 594365   | 2   | GASKET, Exhaust   |
| 884    | 691956   | 1   | CLAMP, Muffler  |
| 1176   | 690941   | 4   | NUT<br>-(Exhaust Manifold)  |
| 1177   | 793859   | 1   | NUT<br>-(Muffler)   |



## Electrical

| REF NO | PART NO   | QTY | DESCRIPTION  |
|--------|-----------|-----|--|
| 578    | 84007350  | 1   | WIRE ASSEMBLY<br>-(Wire Harness Adapter Aids in repowering engine application with Male 6-Pin connector and wires create custom adapter configurations.) |
| 578A   | 19631     | 1   | TOOL, CUSTOM HARNESS<br>-(6-pin Wire Harness Adapter) (Aids in repowering engine application to an EFI engine)   |
| 853    | 84003359  | 1   | ADAPTER, WIRE<br>-(Wire Harness Adapter) (Aids in repowering ExMark) (Flat 6-spade connector to Briggs & Stratton 6-Pin connector)                       |
| 920    | 84002147  | 1   | SOLENOID, STARTER<br>-(Starter Solenoid Kit) (Aids in Repowering when original is solenoid shift)  |
| 983    | 5103809YP | 1   | LIGHT, Indicator<br>-(MIL Light Indicator) (LED Red)   |
| 1616   | 19626     | 1   | CODE READER<br>-(Tiny Scan Code Reader)  |

Not For Reproduction



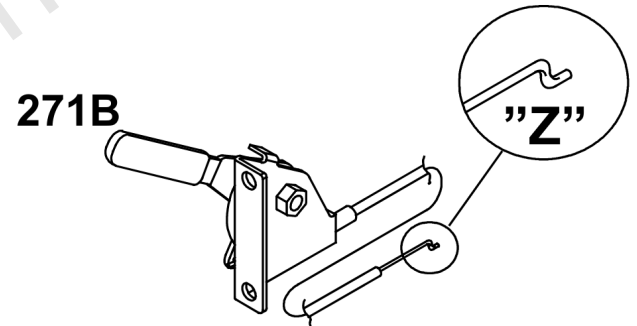
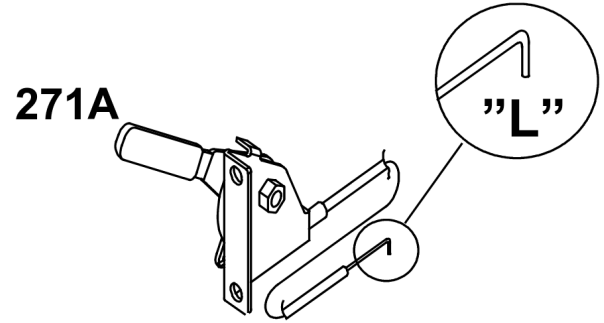
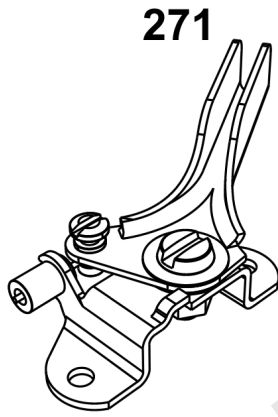
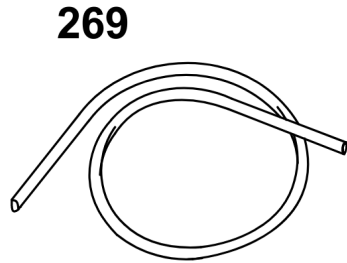
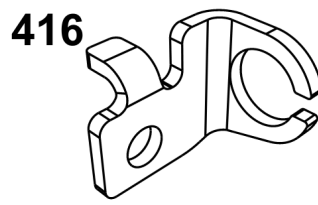
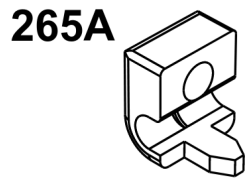
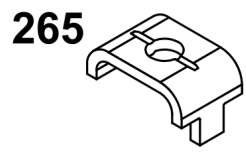
Not For  
Reproduction



## ***Flywheel Guards***

| <b>REF NO</b> | <b>PART NO</b> | <b>QTY</b> | <b>DESCRIPTION</b>   |
|---------------|----------------|------------|--|
| 563           | 799360         | 1          | SCREW<br>-(Debris Screen Guard)  |
| 563A          | 597574         | 1          | SCREW<br>-(Debris Screen Guard)  |
| 563B          | 799359         | 1          | SCREW<br>-(Debris Screen Guard)  |
| 949           | 799357         | 1          | GUARD, Debris Screen<br>-(Static Cover Flywheel) (Requires 4 x 799360 Screw)                             |
| 949A          | 797420YP       | 1          | GUARD, Debris Screen<br>-(Static Cover Flywheel High Flow) (Requires 4 x 799360 Screw)                   |
| 949B          | 593206         | 1          | GUARD, Debris Screen<br>-(Static Cover Flywheel) (Requires 4 x 799359 Screw)                             |
| 949C          | 597573         | 1          | GUARD, Debris Screen<br>-(Wire Static Flywheel Cover) (Requires 4x 597574 Screw) (For Commercial Series) |

Not For Reproduction

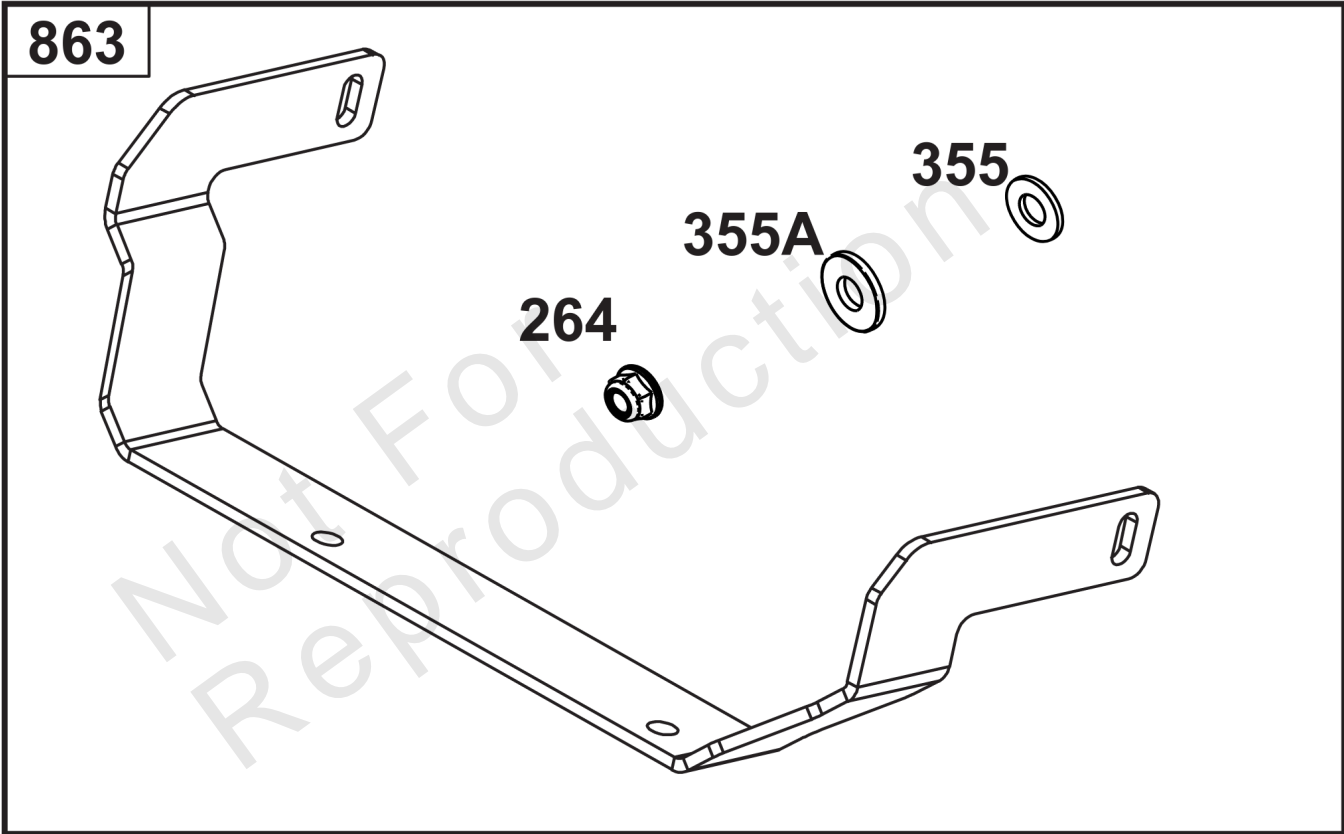


Not For  
Reproduction

## Speed Control

| REF NO | PART NO | QTY | DESCRIPTION  |
|--------|---------|-----|--|
| 265    | 691024  | 1   | CLAMP, Casing<br>-(Casing Clamp for Hard Casing)                 |
| 265A   | 690798  | 1   | CLAMP, Casing<br>-(Casing Clamp for Soft Casing)                 |
| 267    | 792629  | 1   | SCREW<br>-(Screw for Casing Clamp)                               |
| 269    | 93907   | 1   | WIRE, Control<br>-(Control Wire 100')                            |
| 271    | 691028  | 1   | LEVER, Control<br>-(Speed Control Lever Assembly)                |
| 271A   | 692105  | 1   | LEVER, Control<br>-("L" formed end Speed Control Lever Assembly) |
| 271B   | 692541  | 1   | LEVER, Control<br>-("Z" formed end Speed Control Lever Assembly) |
| 416    | 595196  | 1   | BRACKET, Throttle Cable<br>-(Casing Clamp for Snap-In Casing)    |

Not For Reproduction



## Muffler Mounting Hardware

| REF NO | PART NO   | QTY | DESCRIPTION                                 |
|--------|-----------|-----|---|
| 264    | 703465    | 4   | NUT, 5/16-18, GR5<br>-(Muffler Adapter)     |
| 296    | 591756    | 4   | STUD<br>-(Muffler)                          |
| 355    | 5025292SM | 4   | WASHER, 5/16" GD.9 FL<br>-(Muffler Bracket) |
| 355A   | 5025155SM | 2   | WASHER, 5/16<br>-(Muffler Bracket)          |
| 613    | 690341    | 4   | SCREW<br>-(Muffler)                         |
| 613A   | 690363    | 4   | SCREW<br>-(Muffler)                         |
| 863    | 597480    | 1   | BRACKET, Muffler                            |
| 883    | 594365    | 2   | GASKET, Exhaust                             |
| 883A   | 690970    | 2   | GASKET, Exhaust                             |
| 1177   | 690941    | 4   | NUT<br>-(Muffler)                           |

Not For Reproduction

